



Treasures Family Newsletter

September 2023

Welcome to
Renfrew

Educational Services!

Air Quality

With the increase in poor air quality within our city Renfrew will follow the Environment Canada - Monitoring Stations - Air Quality Health Index. This website will provide an air quality rating for Calgary which we will follow to determine if children/students can go outdoors. Each situation will be monitored and adjusted as needed. We will take into account the individual health needs of each child's condition but as standard we will let children go outdoors as long as the rating is within the 1-3 range which is considered 'low risk'. Please let your child's teacher know if you have any questions or concerns.

Important Dates

- Sept. 1 EEP/Jr high ATTEND
- Sept. 4 Labour Day *Schools Closed*
- Sept. 8 EEP/Jr High OFF
- Sept. 9 Renfrew Family Day
- Sept. 15 EEP/Jr high ATTEND
- Sept. 18 School Picture Day *JMC*
- Sept. 19 School Picture Day *JMC*
- Sept. 20 School Picture Day *JMC*
- Sept. 21 School Picture Day *BOW*
- Sept. 22 Non-instructional Day *no classes, no SSP*
- Sept. 25 School Picture Day *TBC*
- Sept. 26 School Picture Day *TBC*
- Sept. 29 EEP/Jr High OFF
- Sept. 30 National Truth and Reconciliation Day

Inside

- Executive Message 2
- Family Support..... 4
- Important Dates 6

Executive Message

News from the Executive Team

The School Year has begun!

We have been preparing for the start of school over the course of the summer. Our school buildings have been thoroughly cleaned and fresh coats of paint applied! Our teams were excited as they set-up their classrooms in preparation of your child arriving.

This year marks a very special year – Renfrew will be celebrating 50 years of services to children, youth, and families. Each month in Treasures we will be highlighting events/activities that occurred over the last 50 years. So join us as we look back from Renfrew’s beginnings as a one room classroom to where we are today and where we are headed in the future.

Renfrew Buses

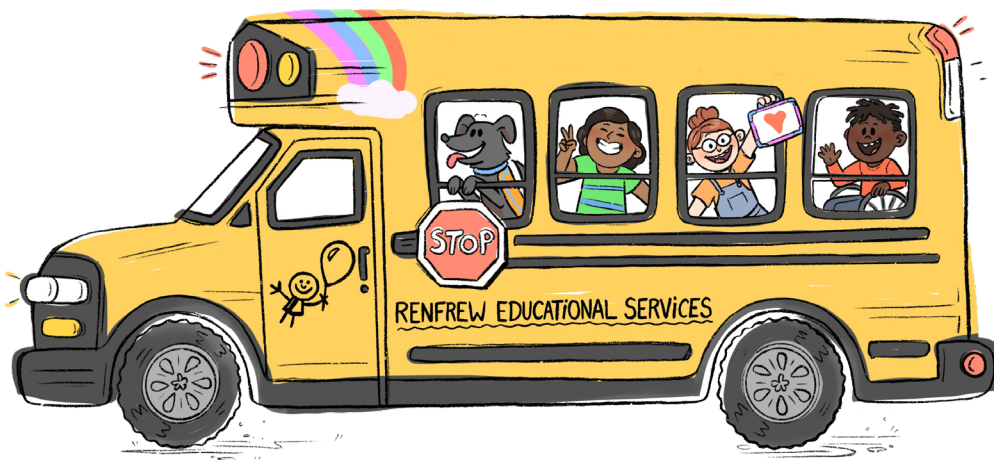
As we venture together through the first week or two of school, we may encounter a few changes to our bus schedules. Bus routes are established by our Manager of Transportation and distributed to bus drivers toward the end of August. When school begins, bus routes may change as we add new children or accommodate children who have moved. We do not anticipate major changes to the routes, but perhaps a few minor ones.

We know that for the first couple of week’s pick-up and drop-off times may be slightly different than predicted. It is important to have your child ready 5 minutes prior to your scheduled pick-up time and be watching for the bus 5 minutes prior to its arrival. Our routes are full and our arrival on time to school or your home depends on the efficiency of loading and unloading which is why we provide you the above time frames.

The safety of the children is always our upmost priority but in particular with loading and unloading from our buses. As parents you are responsible to bring your child to the bus for loading as well as being at the bus upon returning to receive your child. Children will not be permitted to walk to or from the bus on their own.

Please ensure your child does not bring toys, electronic devices, or food with them on the bus. We are pleased to provide a DVD player in our buses for your child’s riding entertainment. Please take a few minutes to review our Transportation Brochure that was left with you by your child’s bus driver, as it outlines some further information.

We promise busing changes will settle down and thank you for your understanding in these early days. We really appreciate your patience!



Janice McTighe
Executive Director



Kim LaCourse
Associate Executive Director



Nicki Wilson
Associate Executive Director

Fundraising over the Summer

On August 17th, 2023, Renfrew was very fortunate to be the recipients of the Annual Magna Insurance Group Charity Golf Classic. The tournament raised over \$100,000 dollars towards the Capital Campaign for Renfrew’s new school in Bears paw.

On August 28th, 2023, Renfrew was also very fortunate to be the recipients of the Calgary Italian Open Golf Tournament. The tournament raised \$75,000 dollars towards the Greenhouse in our new legacy school in Bears paw.

Renfrew is grateful for the support from the teams at Magna Insurance Group and the Flames Foundation as they both contributed to ‘Helping Kids Soar’.

Parent Advisory Councils Go Virtual

Parent Advisory Councils will be set up at each Renfrew location with each site hosting a monthly meeting. Each Parent Advisory Council will establish its direction in collaboration with the Managers and teachers. It is a wonderful opportunity to be involved in your child’s school.

Dates for PAC meetings will follow in the next Treasures newsletter and through your email.

Environmentally Friendly

In our efforts to continue to reduce the amount of paper we generate for the school year this monthly newsletter, our Family Handbook, the school calendar, and classroom information will be posted on our website under the Parent Resource tab.

Please check your email regularly as our teachers will send their weekly updates and ongoing communication to you through email. This format will also be used to send general announcements and fundraising updates.

Reports

Also, on our website, you will find the following information about our school:

- ▶ Education Plan
- ▶ Annual Education Results Reports

To access this document, click the PARENT RESOURCES tab on our Home Page and scroll down to the bottom where you will find the links. If you have any questions, please feel free to contact us.

Social Media

Please follow us on all social media platforms and take a moment to write a Google Review so we can share with the community the experiences of our families first-hand. Simply search for Renfrew Educational Services on Google and look for the "Write a review" button. Please share your happiness with our programs for others who are looking.

Thank You

Welcome to Renfrew, our doors are always open! We are available to meet with you at any time. Please feel free to contact us.

Janice McTighe

Executive Director

T 403.219.5388 F 403.291.2499
janicemctighe@renfreweducation.org

Kim LaCourse

Associate Executive Director

T 403.219.5386 F 403.291.2499
kimlcourse@renfreweducation.org

Nicki Wilson

Associate Executive Director

T 403.291.5038 ext. 1643
nickiwilson@renfreweducation.org

Warmest Regards,

*Janice, Kim
& Nicki*

It's going to be a great year!



Facebook

Search: Renfrew Educational Services



Instagram

RenfrewEducationalServices



Twitter

@RESCalgary



LinkedIn

Search: Renfrew Educational Services

Family Support

Welcome all new and returning families! We hope that you had a wonderful summer and are looking forward to a great school year!

What is Renfrew's Family Support Program?

Renfrew's Family Support Program is dedicated to the well-being of the families and children we serve. Our program offers a variety of family-centred services to facilitate connections and to support families in the home, neighbourhood and community. Every Renfrew school location has a Family Support Worker.

Connect with the Family Support Team!

In September you will receive a package from Family Support. We invite you to fill out this package and return it in your child's backpack in the envelope provided. This package includes:

1. Welcome note and brochure from your Family Support Worker
2. Needs Assessment Form
3. City of Calgary FCSS Survey
4. Parent/Guardian Contact List Form

Did You Know?



**CALGARY
PUBLIC
LIBRARY**

Did you know that Calgary Public Library cards are free? Sign up today and check out their selection of books, digital books, audiobooks, DVDs, Blu-rays, CDs, magazines, newspapers and even musical instruments! Visit <https://reg.calgarylibrary.ca/> to sign up!

Meet the Family Support Team!

The Family Support team is available if you have questions, need resources, are looking for ways to increase your social connections or if you would just like to talk.

The following is a list of the Family Support Workers and their contact information.

Renfrew Schools



Cory Francis
Family Support Worker
Team Lead

Janice McTighe Centre
403.291.5038 ext. 1351 cfrancis@renfreweducation.org



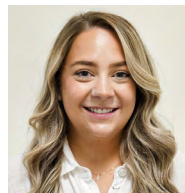
Sarah Livingstone
Family Support Worker

Bowness Centre
403.291.5038 ext. 1811 slivingstone@renfreweducation.org



Emily Stevenson

Child Development Centre
403.291.5038 ext. 1244 estevenson@renfreweducation.org



Emily Voisey
Family Support Worker

Thomas W. Buchanan Centre
403.291.5038 ext. 1606 evoisey@renfreweducation.org

First Nations



Alexa Connolly
Family Support Worker

- Bighorn Health Centre
- Mini Thni / Stoney Health (Morley)

aconnolly@renfreweducation.org



COFFEE & CHAT

Family Support offers a variety of Coffee & Chat Groups during the school year. This is a great opportunity to connect with other Renfrew parents and guardians!

Please reach out to the Family Support Worker at your Renfrew location if you require help with transportation.

KidzGo 688 Heritage Dr SE #100, Calgary, AB

September 28, 2023

Morning Group: 9:15am

Afternoon Group: 1:00pm

Evening Group: 5:00pm



KidzGO

Join us at KidzGo (www.kidzgoplay.ca) for a morning, afternoon, or evening of indoor play! KidzGo offers a variety of fun activities ranging from a race track, giant slides, large building blocks, and more. Siblings are welcome. You can stay as long as you wish; closing time is 7:00pm. Renfrew will pay your admission!

- Adults must come with a child, and children must come with an adult. No outside food is allowed, and socks or slippers must be worn inside.

Please register by September 21, 2023

by emailing Sarah Livingstone at

sarahlivingstone@renfreweducation.org

In your email, please include the following information:

- ▶ Which group are you registering for? Morning, afternoon or evening?
- ▶ Your name and the name of your Renfrew child
- ▶ The Renfrew location that your child attends
- ▶ How many people are attending this event
- ▶ The ages of all people attending the event
- ▶ If you are bringing a support aide

Telus Spark Science Centre 220 St George's Drive NE



Renfrew is pleased to announce that we are part of Telus Spark's (www.sparkscience.ca) Community Connections Program again this year! This partnership allows Renfrew to access a limited number of tickets to the Telus Spark Science Centre. If you are interested in exploring this exciting facility with your child(ren), please join us on one of these dates! Renfrew will provide a limited number of free admission tickets.

PARKING: Please note that you will be required to pay for parking (\$7/day) if you choose to park in the Telus Spark parking lot. You can pay for parking at the machine located beside the front doors or you can download the ParkPlus App and prepay for your parking session (Zone 8310).

- Adults must come with a child and children must be accompanied by an adult. Parents and guardians are responsible for transporting and supervising their children.
- If you require help with transportation, please contact the Family Support Worker at your Renfrew school.

Registration is limited!

October 12, 2023

Morning Group: 9:15am

Afternoon Group: 1:00pm

**Please register by
October 5, 2023**

November 15, 2023

Morning Group: 9:15am

Afternoon Group: 1:00pm

**Please register by
November 8, 2023**

December 14, 2023

Morning Group: 9:15am

Afternoon Group: 1:00pm

**Please register by
December 7, 2023**

Register for any of these sessions by emailing Sarah Livingstone at

sarahlivingstone@renfreweducation.org

In your email, please include the following information:

- ▶ Which date are you registering for?
- ▶ Which group are you registering for? Morning or afternoon?
- ▶ Your name and the name of your Renfrew child
- ▶ The Renfrew location that your child attends
- ▶ How many people are attending
- ▶ The ages of all people attending
- ▶ If you are bringing a support aide

Treehouse Indoor Playground - Calgary NORTH Location 3337 34 Avenue NE

October 25, 2023

Morning Group: 9:15am Afternoon Group: 1:00pm Evening Group: 5:00pm



Indoor Playground & Cafe

Join us at Treehouse (North) for a morning, afternoon, or evening of indoor play! Treehouse has an open-concept space which includes play structures, games and prizes, rock climbing and a game floor. Siblings are welcome. Renfrew will pay your admission!

- Adults must come with a child, and children must come with an adult. No outside food is allowed, and socks or slippers must be worn inside.
- **Please note:** Treehouse requires participants to sign an online waiver form. You can view this waiver on the website at <http://treehouseplay.com/waiverform/index.html>

Please register by October 18, 2023 by emailing Sarah Livingstone at

sarahlivingstone@renfreweducation.org

In your email, please include the following information:

- ▶ Which group are you registering for? Morning, afternoon, or evening?
- ▶ Your name and the name of your Renfrew child
- ▶ The Renfrew location that your child attends
- ▶ How many people are attending this event
- ▶ The ages of all people attending the event
- ▶ If you are bringing a support aide

Important Dates

September 2023

Sun	Mon	Tue	Wed	Thu	Fri	Sat		
					1 EEP/Jr high ATTEND	2		
3	4 Labour Day Schools Closed	5	6	7	8 EEP/Jr High OFF	9 Renfrew Family Day		
10	11	12	13	14	15 EEP/Jr high ATTEND	16		
17	18 School Picture Day JMC	19 School Picture Day JMC	20 School Picture Day JMC	21 School Picture Day BOW	22 Non-instructional Day no classes, no SSP	23		
24	25 School Picture Day TBC	26 School Picture Day TBC	27	28	29 EEP/Jr High OFF	30 National Truth and Reconciliation Day		
<div style="border: 1px solid black; padding: 5px;"> <p>Coming up:</p> <table style="width: 100%; border-collapse: collapse;"> <tr> <td style="width: 50%; vertical-align: top;"> <p>Oct. 4 School Picture Day <i>CDC</i></p> <p>Oct. 6 EEP/Jr high ATTEND</p> <p>Oct. 9 Thanksgiving <i>Schools Closed</i></p> <p>Oct. 12 Non-instructional Day <i>no classes, no SSP</i></p> <p>Oct. 13 Non-instructional Day <i>no classes, no SSP</i></p> </td> <td style="width: 50%; vertical-align: top;"> <p>Oct. 20 EEP/Jr high ATTEND</p> <p>Oct. 26 Renfrew Family Night</p> <p>Oct. 27 EEP/Jr high OFF</p> <p>Oct. 31 Halloween</p> </td> </tr> </table> </div>							<p>Oct. 4 School Picture Day <i>CDC</i></p> <p>Oct. 6 EEP/Jr high ATTEND</p> <p>Oct. 9 Thanksgiving <i>Schools Closed</i></p> <p>Oct. 12 Non-instructional Day <i>no classes, no SSP</i></p> <p>Oct. 13 Non-instructional Day <i>no classes, no SSP</i></p>	<p>Oct. 20 EEP/Jr high ATTEND</p> <p>Oct. 26 Renfrew Family Night</p> <p>Oct. 27 EEP/Jr high OFF</p> <p>Oct. 31 Halloween</p>
<p>Oct. 4 School Picture Day <i>CDC</i></p> <p>Oct. 6 EEP/Jr high ATTEND</p> <p>Oct. 9 Thanksgiving <i>Schools Closed</i></p> <p>Oct. 12 Non-instructional Day <i>no classes, no SSP</i></p> <p>Oct. 13 Non-instructional Day <i>no classes, no SSP</i></p>	<p>Oct. 20 EEP/Jr high ATTEND</p> <p>Oct. 26 Renfrew Family Night</p> <p>Oct. 27 EEP/Jr high OFF</p> <p>Oct. 31 Halloween</p>							



Renfrew's Suggestion Box

Do you have an idea or suggestion you want to pass on to us? A question that you want answered? Something about Renfrew that you like or don't like?

Email your suggestion to:
Renfrew@renfreweducation.org

or use this form, remembering to include your name and contact information.

Name: _____ Phone: _____

Email: _____