

# Treasures Family Newsletter

October 2023

Looking forward to a fun month!



## Important Dates

Oct 4	School Picture Day <i>CDC</i>
Oct 6	Elementary Education/Jr high ATTEND
Oct 9	Thanksgiving <i>Schools Closed</i>
Oct 12	Non-instructional Day <i>no classes, no SSP</i>
Oct 13	Non-instructional Day <i>no classes, no SSP</i>
Oct 20	Elementary Education/Jr high ATTEND
Oct 26	Renfrew Family Night
Oct 27	Elementary Education/Jr high OFF
Oct 31	Halloween

## Inside

Executive Message .....	2
Family Support.....	3
Important Dates .....	5
Renfrew's Suggestion Box.....	5

# Executive Message

## News from the Executive Team

### Our School Year is Off to a Great Start!

We appreciate your patience and understanding as our schools settle into our new routines.

We have experienced many busing changes over the last month, but we feel overall our bus service has settled into a regular routine. We are very fortunate to have an outstanding transportation system with a fleet of 48 buses and the most amazing bus drivers! Please keep us informed if there are any changes that will affect your child's bus ride.

#### 50<sup>th</sup> Anniversary Annual Helping Kids Soar Charity Gala

March 13<sup>th</sup>, 2024



We are so excited to hold our 25<sup>th</sup> gala event – from small beginnings raising \$15,000.00 dollars year one to \$427,000.00 this past March. We are presently working on our sponsorship material and will be asking our families for support in purchasing auction items and sponsorships.

Did you know that Renfrew is a not-for-profit organization, and we rely on fundraising for many of our special projects. We do not receive any government funding for any capital expenses so all of our specialty rooms such as our Mind and Movement Rooms, Greenhouses, Multi-Sensory Rooms along with Specialized Equipment, Assistive Technology, and we cannot forget our Buses, and school buildings are all paid for by individuals like you. We are grateful for the support we receive which allows us to provide exceptional spaces and materials for your children.

We will continue to raise funds for our Legacy School in Bears paw which we launched at the gala in March 2023. This is a very exciting project as we build a school that will offer children (preschool to grade 12) with disabilities an exceptional program in a purposeful designed school.

#### Parent Advisory Council (PAC)

Please watch for information about Parent Advisory Council meetings at your child's school location. The PAC is one way that parents can participate in their child's school. It is also a fun way to connect with other Renfrew parents. Please consider joining this committee. The manager at your location will be happy to discuss the details with you.

#### Family Night

The Family Night that is scheduled for October 26<sup>th</sup> – we are very excited to host a family fun event. Information will be sent to you within the next few weeks from your child's teacher.

#### Did You Know...

Renfrew offers many different types of services to children and families within Renfrew as well as within the community.

- We offer our **Preschool Programs** at our four school sites. In our preschool we serve close to 450 children. We also offer 146 spaces to students in our **Elementary Education and Jr. High Program**. The Elementary/Jr. High programs operate out of the Janice McTighe and Thomas W. Buchanan Centres.
- Our specialized programs/services include **Children with Motor Disabilities, Autism Spectrum Disorders, Wellness Empowerment Program, and Stony Nakoda and Tsuut'ina Nations**.
- Our **Community Services** department continues to provide services to students attending various community and Independent Schools.
- Our **Assessment and Therapy Services** department offers work in the community completing assessments and intervention.



**Janice McTighe**  
Executive Director



**Kim LaCourse**  
Associate Executive Director



**Nicki Wilson**  
Associate Executive Director

#### Open-door Policy

At Renfrew, we have an open-door policy. We know many families liked the option of using virtual platforms to connect so either way – virtual or in-person we are always available. Please call, email, or arrange a virtual meeting with your child's teacher, or contact the Manager with any questions you have.

Renfrew is proud and honoured to have talented and knowledgeable teams working with children and families. From the first step on the school bus then inside our schools and throughout the community at large, our staff is devoted, caring, and dedicated to doing what is best for your children. We are proud of our 50 years of experience educating young children and planning for our youth. We continue to provide exemplary programs and services to children and their families and look forward to another successful year of fun and learning!

#### Thank You

Our doors are always open! We are available to connect with parents at any time. Please feel free to contact us:

**Janice McTighe**  
Executive Director

**T 403.219.5388 F 403.291.2499**  
[janicemctighe@renfreweducation.org](mailto:janicemctighe@renfreweducation.org)

**Kim LaCourse**  
Associate Executive Director

**T 403.219.5386 F 403.291.2499**  
[kimlacourse@renfreweducation.org](mailto:kimlacourse@renfreweducation.org)

**Nicki Wilson**

Associate Executive Director  
**T 403.291.5038 ext. 1643**  
[nickiwilson@renfreweducation.org](mailto:nickiwilson@renfreweducation.org)

**Warmest Regards,**

*Janice, Kim & Nicki*

# Family Support

Welcome all new and returning families! We hope that you had a wonderful summer and are looking forward to a great school year!

## What is Renfrew's Family Support Program?

Renfrew's Family Support Program is dedicated to the well-being of the families and children we serve. Our program offers a variety of family-centred services to facilitate connections and to support families in the home, neighborhood and community. Every Renfrew school location has a Family Support Worker.

## MARK YOUR CALENDARS!

### Holiday Helping Project 2023

We are pleased to announce that the Holiday Helping Project will begin November 1! The Holiday Helping Project is an annual program that provides assistance to Renfrew families during the winter holiday season.

From November 1 to December 1, we invite you to send a donation to school

with your child. Renfrew will provide you with a tax-deductible receipt for any donation of \$20 and over, if requested. A form will come home in your child's backpack with more details. All donations collected will be used to buy gift cards for Renfrew families who may not be able to buy special food or gifts at this festive time of year.

### Feel confident going back to school with the Library

Boost your confidence and get your children ready for school with essential Library resources, from programs and study supports, to helpful tips for parents.

Find them all at [calgarylibrary.ca/students](http://calgarylibrary.ca/students)



## CALGARY PUBLIC LIBRARY

### Meet the residents

Welcome Sumin Choi, Children's Illustrator in Residence, and Elizabeth Haynes, Author in Residence, to the Library.

Each resident will be hosting programs about their area of expertise and is available for one-on-one consultations.

Learn more about Sumin and Elizabeth at [calgarylibrary.ca/arts-and-culture](http://calgarylibrary.ca/arts-and-culture)

### October 14 is Love Your Library Day

Join Calgary Public Library to celebrate Love Your Library Day on October 14 at all locations. Enjoy special activities, performances, and more.

Plan your visit at [calgarylibrary.ca/love-your-library](http://calgarylibrary.ca/love-your-library)

### Get cozy with fall programs

Fall programs are back! Get into the season with favourites like Fireplace Tales, Babies Go Boo, and Falling Leaves Storytime, or attend board games night as a family at your nearest location.

Register for fall programs at [calgarylibrary.ca/programs](http://calgarylibrary.ca/programs)

## Meet the Family Support Team!

The Family Support team is available if you have questions, need resources, are looking for ways to increase your social connections or if you would just like to talk.

The following is a list of the Family Support Workers and their contact information.

### Renfrew Schools



**Cory Francis**  
Family Support Worker  
**Team Lead**

Janice McTighe Centre  
403.291.5038 ext. 1351  
[cfrancis@renfreweducation.org](mailto:cfrancis@renfreweducation.org)



**Sarah Livingstone**  
Family Support Worker

Bowness Centre  
403.291.5038 ext. 1811  
[slivingstone@renfreweducation.org](mailto:slivingstone@renfreweducation.org)



**Emily Stevenson**

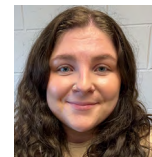
Child Development Centre  
403.291.5038 ext. 1244  
[estevenson@renfreweducation.org](mailto:estevenson@renfreweducation.org)



**Emily Voisey**  
Family Support Worker

Thomas W. Buchanan Centre  
403.291.5038 ext. 1606  
[evoisey@renfreweducation.org](mailto:evoisey@renfreweducation.org)

### First Nations



**Alexa Connolly**  
Family Support Worker

Bighorn Health Centre  
Mini Thni / Stoney Health (Morley)  
[aconnolly@renfreweducation.org](mailto:aconnolly@renfreweducation.org)



# COFFEE & CHAT

Family Support offers a variety of Coffee & Chat groups during the school year. This is a great opportunity to connect with other Renfrew parents & guardians!

Please reach out to the Family Support Worker at your Renfrew location if you require help with transportation.

## Telus Spark Science Centre 220 St George's Drive NE



Renfrew is pleased to announce that we are part of Telus Spark's ([www.sparkscience.ca](http://www.sparkscience.ca)) Community Connections Program again this year! This partnership allows Renfrew to access a limited number of tickets to the Telus Spark Science Centre. If you are interested in exploring this exciting facility with your child(ren), please join us on one of these dates! Renfrew will provide a limited number of free admission tickets.

**PARKING:** Please note that you will be required to pay for parking (\$7/day) if you choose to park in the Telus Spark parking lot. You can pay for parking at the machine located beside the front doors or you can download the ParkPlus App and prepay for your parking session (Zone 8310).

- Adults must come with a child and children must be accompanied by an adult. Parents and guardians are responsible for transporting and supervising their children.
- If you require help with transportation, please contact the Family Support Worker at your Renfrew school.

**Registration is limited!**

**October 12, 2023**

Morning Group: 9:15am  
Afternoon Group: 1:00pm

**Please register by  
October 5, 2023**

**November 15, 2023**

Morning Group: 9:15am  
Afternoon Group: 1:00pm

**Please register by  
November 8, 2023**

**December 14, 2023**

Morning Group: 9:15am  
Afternoon Group: 1:00pm

**Please register by  
December 7, 2023**

Register for any of these sessions by emailing Sarah Livingstone at [sarahlivingstone@renfreweducation.org](mailto:sarahlivingstone@renfreweducation.org)

**In your email, please include the following information:**

- Which date are you registering for?
- Which group are you registering for? Morning or afternoon?
- Your name and the name of your Renfrew child
- The Renfrew location that your child attends
- How many people are attending
- The ages of all people attending
- If you are bringing a support aide

## Treehouse Indoor Playground - Calgary NORTH Location 3337 34 Avenue NE

**October 25, 2023**

Morning Group: 9:15am Afternoon Group: 1:00pm Evening Group: 5:00pm



**Indoor Playground & Cafe**

Join us at Treehouse (North) for a morning, afternoon, or evening of indoor play! Treehouse has an open-concept space which includes play structures, games and prizes, rock climbing and a game floor. Siblings are welcome. Renfrew will pay your admission!

- Adults must come with a child, and children must come with an adult. No outside food is allowed, and socks or slippers must be worn inside.
- **Please note:** Treehouse requires participants to sign an online waiver form. You can view this waiver on the website at <http://treehouseplay.com/waiverform/index.html>

Please register by October 18, 2023 by emailing Sarah Livingstone at [sarahlivingstone@renfreweducation.org](mailto:sarahlivingstone@renfreweducation.org)

**In your email, please include the following information:**

- Which group are you registering for? Morning, afternoon, or evening?
- Your name and the name of your Renfrew child
- The Renfrew location that your child attends
- How many people are attending this event
- The ages of all people attending the event
- If you are bringing a support aide

## School Information Sessions

Are you wondering where your child with special needs will go when he or she leaves Renfrew? Do you have questions about the process of transitioning to a new school?

You are not alone! Join us for our **School Information Sessions**.

### Transitioning out of Renfrew's Preschool Program

➤ **October 18, 2023 9:30 – 11:00am**

- Online using ZOOM
- Register by **October 11, 2023**

➤ **November 2, 2023 9:30 – 11:00am**

- Online using ZOOM
- Register by **October 26, 2023**

➤ **November 21, 2023 6:30 – 8:00pm**

- Online using ZOOM
- Register by **November 14, 2023**

### Transitioning out of Renfrew's Elementary Education and Junior High Program

Transitioning out of Renfrew's Elementary Education and Junior High Program is a big life event that affects the whole family. Do you have questions about the process of transitioning to a new school or about issues related to junior high school? This will be a great opportunity to meet other parents and share your hopes and fears for the coming year. A Manager and Family Support Worker will be available to answer questions about the process of transitioning out of Renfrew.

➤ **November 8, 2023 1:30 – 3:00 pm**

- Janice McTighe Centre (JMC)  
2050 21 Street NE
- Register by **November 1, 2023**

**To Register for Information Sessions:**

- Email Sarah Livingstone at [sarahlivingstone@renfreweducation.org](mailto:sarahlivingstone@renfreweducation.org)
- Please include the date of the session, your name, your child's name, and Renfrew location in your email.

If you have any barriers to attending these sessions, please contact the Family Support Worker at your Renfrew school.

# Important Dates

## October 2023

Sun	Mon	Tue	Wed	Thu	Fri	Sat										
1	2	3	4 School Picture Day CDC	5	6 Elementary Education/Jr high ATTEND	7										
8	9 Thanksgiving Schools Closed	10	11	12 Non-instructional Day no classes, no SSP	13 Non-instructional Day no classes, no SSP	14										
15	16	17	18	19	20 Elementary Education/Jr high ATTEND	21										
22	23	24	25	26 Renfrew Family Night	27 Elementary Education/Jr high OFF	28										
29	30	31 Halloween														
<p><b>Coming up:</b></p> <table> <tr> <td><b>Nov 3</b> Elementary Education/Jr high ATTEND</td> <td><b>Nov 17</b> Non-instructional Day no classes, no SSP</td> </tr> <tr> <td><b>Nov 5</b> Daylight Saving <i>Fall Back</i></td> <td><b>Nov 24</b> Elementary Education/Jr high ATTEND</td> </tr> <tr> <td><b>Nov 10</b> Elementary Education/Jr high OFF</td> <td><b>Nov 16</b> Parent/Teacher Conferences <i>EVENING</i></td> </tr> <tr> <td><b>Nov 11</b> Remembrance Day</td> <td></td> </tr> <tr> <td><b>Nov 16</b> Parent/Teacher Conferences <i>EVENING</i></td> <td></td> </tr> </table>							<b>Nov 3</b> Elementary Education/Jr high ATTEND	<b>Nov 17</b> Non-instructional Day no classes, no SSP	<b>Nov 5</b> Daylight Saving <i>Fall Back</i>	<b>Nov 24</b> Elementary Education/Jr high ATTEND	<b>Nov 10</b> Elementary Education/Jr high OFF	<b>Nov 16</b> Parent/Teacher Conferences <i>EVENING</i>	<b>Nov 11</b> Remembrance Day		<b>Nov 16</b> Parent/Teacher Conferences <i>EVENING</i>	
<b>Nov 3</b> Elementary Education/Jr high ATTEND	<b>Nov 17</b> Non-instructional Day no classes, no SSP															
<b>Nov 5</b> Daylight Saving <i>Fall Back</i>	<b>Nov 24</b> Elementary Education/Jr high ATTEND															
<b>Nov 10</b> Elementary Education/Jr high OFF	<b>Nov 16</b> Parent/Teacher Conferences <i>EVENING</i>															
<b>Nov 11</b> Remembrance Day																
<b>Nov 16</b> Parent/Teacher Conferences <i>EVENING</i>																



## Renfrew's Suggestion Box

Do you have an idea or suggestion you want to pass on to us? A question that you want answered? Something about Renfrew that you like or don't like?

Email your suggestion to:

**Renfrew@renfreweducation.org**

or use this form, remembering to include your name and contact information.

---



---



---



---

Name: \_\_\_\_\_ Phone: \_\_\_\_\_

Email: \_\_\_\_\_