

Treasures Family Newsletter

September 2024

Welcome
 to Renfrew
 Educational
 Services!



Important Dates

Sept 2 Labour Day *Schools Closed*

Sept 6 EEP/Jr High *OFF*

Sept 13 EEP/Jr High *ATTEND*

Sept 14 Renfrew Family Day

Sept 17 Picture Day *Janice McTighe Centre*

Sept 18 Picture Day *Janice McTighe Centre*

Sept 19 Picture Day *Bowness Centre*

Sept 20 Non-Instructional Day *No Classes, No SAS*

Sept 23 Picture Day *Thomas W Buchanan Centre*

Sept 24 Picture Day *Thomas W Buchanan Centre*

Sept 27 EEP/Jr High *OFF*

Sept 30 National Truth & Reconciliation Day
Schools Closed

Inside

Executive Message 2

Family Support..... 4

Important Dates 6

Executive Message

News from the Executive Team

The School Year has begun!

We have been preparing for the start of school over the course of the summer. Our school buildings have been thoroughly cleaned and fresh coats of paint applied! Our teams were excited as they set-up their classrooms in preparation of your child arriving. We are off to a great start.

Renfrew Buses

As we venture together through the first week or two of school, we may encounter a few changes to our bus schedules. Bus routes are established by our Manager of Transportation and distributed to bus drivers toward the end of August. When school begins, bus routes may change as we add new children or accommodate children who have moved. We do not anticipate major changes to the routes, but perhaps a few minor ones.

We know that for the first couple of week's pick-up and drop-off times may be slightly different than predicted. It is important to have your child ready 5 minutes prior to your scheduled pick-up time and be watching for the bus 5 minutes prior to its arrival. Our routes are full and our arrival on time to school or your home depends on the efficiency of loading and unloading which is why we provide you the above time frames.

The safety of the children is always our upmost priority but in particular with loading and unloading from our buses. As parents you are responsible to bring your child to the bus for loading as well as being at the bus upon returning to receive your child. Children will not be permitted to walk to or from the bus on their own.

Please ensure your child does not bring toys, electronic devices, or food with them on the bus. We are pleased to provide a DVD player in our buses for your child's riding entertainment. Please take a few minutes to review our Transportation Brochure that was left with you by your child's bus driver, as it outlines some further information.

We promise busing changes will settle down and thank you for your understanding in these early days. We really appreciate your patience!



Janice McTighe
Executive Director



Kim LaCourse
Associate Executive Director



Nicki Wilson
Associate Executive Director

Fundraising over the Summer

On August 15th, 2024, Renfrew was very fortunate to be the recipients of the Annual Magna Insurance Group Charity Golf Classic. The tournament raised over \$100,000 dollars towards the Capital Campaign for Renfrew's new school in Bears paw.

On August 26th, 2024, Renfrew was also very fortunate to be the recipients of the Calgary Italian Open Golf Tournament. The tournament raised \$75,000 dollars towards the Greenhouse in our new legacy school in Bears paw.

Renfrew is grateful for the support from the teams at Magna Insurance Group and the Flames Foundation as they both contributed to 'Helping Kids Soar'.



Parent Advisory Councils Move to a Hybrid Model

Parent Advisory Councils will be set up at each Renfrew location with each site hosting a monthly meeting. Each Parent Advisory Council will establish its direction in collaboration with the Managers and teachers. It is a wonderful opportunity to be involved in your child's school.

Each site will also determine if their meetings will be held at the school or virtually. Dates for PAC meetings will follow in the next Treasures newsletter and through your email.

Environmentally Friendly

In our efforts to continue to reduce the amount of paper we generate for the school year this monthly newsletter, our Family Handbook, the school calendar, and classroom information will be posted on our website under the Parent Resource tab.

Please check your email regularly as our teachers will send their weekly updates and ongoing communication to you through email. This format will also be used to send general announcements and fundraising updates.

Reports

Also, on our website, you will find the following information about our school:

- ▶ Education Plan
- ▶ Annual Education Results Reports

To access these documents, click the PARENT LOUNGE tab on our Home Page and scroll down to the bottom where you will find the links. If you have any questions, please feel free to contact us.

Social Media

Please follow us on all social media platforms and take a moment to write a Google Review so we can share with the community the experiences of our families first-hand. Simply search for Renfrew Educational Services on Google and look for the "Write a review" button. Please share your happiness with our programs for others who are looking.

Thank You

Welcome to Renfrew, our doors are always open! We are available to meet with you at any time. Please feel free to contact us:

Janice McTighe

Executive Director

T 403.219.5388 F 403.291.2499

janicemctighe@renfreweducation.org

Kim LaCourse

Associate Executive Director

T 403.219.5386 F 403.291.2499

kimlcourse@renfreweducation.org

Nicki Wilson

Associate Executive Director

T 403.291.5038 ext. 1643

nickiwilson@renfreweducation.org

Warmest Regards,

Janice, Kim & Nicki



Please follow us on all social media platforms and take a moment to write a Google Review so we can share with the community the experiences of our families first-hand. Simply search for Renfrew Educational Services on Google and look for the "Write a review" button or click here: [Google Review](#). Please share your happiness with our programs for others who are looking.



Family Support

Welcome to all new and returning families! We hope that you had a wonderful summer and are looking forward to a great school year!

What is Family Support?

Renfrew's Family Support Program is dedicated to the well-being of the families and children we serve. Our program offers a variety of family-centred services to facilitate connections and to support families in the home, neighborhood and community. Every Renfrew school location has a Family Support Worker.

Connect with the Family Support Team!

In September you will receive a package from Family Support. We encourage you to fill out this package and return it in your child's backpack in the envelope provided. This information enables us to serve you better and remain accountable to our funders.

This package includes:

1. Welcome note and brochure from your Family Support Worker
2. Needs Assessment Form
3. City of Calgary FCSS Survey

Did you know?

Did you know that you can request an interpreter to help with communication? Renfrew is proud to offer interpretation through our partnerships with the Calgary Immigrant Women's Association (CIWA), Calgary Catholic Immigration Society (CCIS), and Alberta Health Services (AHS) Language Line.

You can request an interpreter on the form provided in Family Support's package, by checking the box beside your language. You can also call or email the Family Support Worker at your Renfrew school!

What's new this year?

Family Support coordinates a Family Contact Book to help you connect with other Renfrew families! Instead of a paper form, you can sign up to be part of this book by filling out a form! You will receive a form link by email or you can also click the link here: [Family Contact Book](#)



The Library is ready for back-to-school!

As your kids get settled into the school year, Calgary Public Library has resources and programs to help. The Learn to Read collection is designed to support families, help children discover books written for their reading stage, and to support reading at home. Decodable books have also been added to the collection to help young readers feel confident reading out loud. Access these books and more with your free Library card: <https://www.calgarylibrary.ca/>

Move your career forward with the Job Desk

If you are searching for a job, are considering a career shift, or want to improve your job and career skills, Calgary Public Library's Job Desk can help. In partnership with Bow Valley College, professional career coaches can help you find where to search and apply for employment, review your resume or job application, or guide you through a career change. Book your free in-person or virtual appointment today: <https://www.calgarylibrary.ca/events-and-programs/programs/?query=job+desk>

Learn more about film in Alberta

CONTRA, the Library's Filmmaker in Residence, is an artist who shares experiences through film, music, and creative direction. CONTRA's programs at the Library will explore both introductory and in-depth filmmaking concepts. She will share more about Alberta's filmmaking scene, how to get started on film pitching, and more. Read more about CONTRA's Library residency: <https://www.calgarylibrary.ca/library-news/filmmaker-in-residence/>

Renfrew's Family Support Program is dedicated to the well-being of the families and children we serve. Our program offers a variety of family-centred services to facilitate connections and to support families in the home, neighbourhood and community. Every Renfrew school location has a Family Support Worker.

The Family Support Team

The Family Support team is available if you have questions, need resources, are looking for ways to increase your social connections or if you would just like to talk. The following is a list of the Family Support Workers and their contact information.

Renfrew Schools



Cory Francis
Family Support Worker
Team Lead

Janice McTighe Centre
403.291.5038 ext. 1351
cfrancis@renfreweducation.org



Sarah Livingstone
Family Support Worker

Bowness Centre
403.291.5038 ext. 1811
slivingstone@renfreweducation.org



Emily Stevenson
Family Support Worker

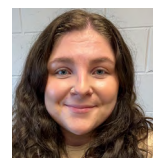
Child Development Centre
403.291.5038 ext. 1244
estevenson@renfreweducation.org



Emily Voisey
Family Support Worker

Thomas W. Buchanan Centre
403.291.5038 ext. 1606
evoisey@renfreweducation.org

First Nations



Alexa Connolly
Family Support Worker

Bighorn Health Centre
Mini Thni / Stoney Health (Morley)
aconnolly@renfreweducation.org



COFFEE & CHAT GROUPS

Family Support offers a variety of Coffee & Chat Groups during the school year.
This is a great opportunity to connect with other Renfrew parents and guardians!

Please reach out to the Family Support Worker at your Renfrew location if you require help with transportation.

KidzGo www.kidzgoplay.ca

688 Heritage Dr SE #100, Calgary, AB

Wednesday, September 25
5:00pm



Join us at KidzGo for an evening of indoor play! KidzGo offers a variety of fun activities ranging from a race track, giant slides, large building blocks, and more. Siblings are welcome. You can stay as long as you wish; closing time is 7:00 pm. Renfrew will pay your admission!

- Adults must come with a child, and children must come with an adult. No outside food is allowed, and socks or slippers must be worn inside.

Please register by September 18

by emailing Sarah Livingstone at

sarahlivingstone@renfreweducation.org

When you register, please include the following information:

- Your name and the name of your Renfrew child
- The Renfrew location that your child attends
- How many people are attending this event
- The ages of all people attending the event
- If you are bringing a support aide

Telus Spark Science Centre www.sparkscience.ca

220 St. George's Drive NE

Wednesday, October 9
Morning group 9:15am
Afternoon group 1:00pm

Thursday, November 14
Morning group 9:15am
Afternoon group 1:00pm

Thursday, December 12
Morning group 9:15am
Afternoon group 1:00pm

Register by Oct 2

Register by Nov 7

Register by Dec 5



Renfrew is pleased to announce that we are part of Telus Spark's Community Connections Program again this year! This partnership allows Renfrew to access a limited number of tickets to the Telus Spark Science Centre. If you are interested in exploring this exciting facility with your child(ren), please join us on one of these dates! Renfrew will provide a limited number of free admission tickets.

- **PARKING:** Please note that you will be required to pay for parking (\$10/day) if you choose to park in the Telus Spark parking lot. You can pay for parking at the machine located beside the front doors or you can download the ParkPlus App and prepay for your parking session (Zone 8310).
- **PLEASE NOTE:** Adults must come with a child and children must be accompanied by an adult. Parents and guardians are responsible for transporting and supervising their children. If you require help with transportation, please contact the Family Support Worker at your Renfrew school.

Registration is limited!

Please register by emailing

Sarah Livingstone at

sarahlivingstone@renfreweducation.org

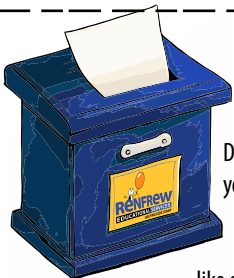
When registering, it is important to include the following information:

- Which date are you registering for?
- Which group are you registering for? Morning or afternoon?
- Your name and the name of your Renfrew child
- The Renfrew location that your child attends
- How many people are attending
- The ages of all people attending
- If you are bringing a support aide

Important Dates

September 2024

Sun	Mon	Tue	Wed	Thu	Fri	Sat
1	2 Labour Day Schools Closed	3	4	5	6 EEP/Jr High OFF	7
8	9	10	11	12	13 EEP/Jr High ATTEND	14 Renfrew Family Day
15 Mawlid al-Nabi Muslim	16 Picture Day Janice McTighe Centre	17 Picture Day Janice McTighe Centre	18 Picture Day Janice McTighe Centre	19 Picture Day Bowness Centre	20 Non-Instructional Day No Classes, No SAS	21
22	23 Picture Day Thomas W Buchanan Centre	24 Picture Day Thomas W Buchanan Centre	25	26	27 EEP/Jr High OFF	28
29	30 National Truth & Reconciliation Day Schools Closed					
<div>Next Month:</div> <div> <div>Oct 2 Picture Day Child Development Centre</div> <div>Oct 4 EEP/Jr High ATTEND</div> <div>Oct 10 Non-Instructional Day No Classes, No SAS</div> <div>Oct 11 Non-Instructional Day No Classes, No SAS</div> <div>Oct 14 Thanksgiving Schools Closed</div> <div>Oct 18 EEP/Jr High ATTEND</div> <div>Oct 24 Family Night</div> <div>Oct 25 EEP/Jr High OFF</div> <div>Oct 31 Halloween</div> </div>						



Renfrew's Suggestion Box

Do you have an idea or suggestion you want to pass on to us? A question that you want answered? Something about Renfrew that you like or don't like?

Email your suggestion to:

Renfrew@renfreweducation.org

or use this form, remembering to include your name and contact information.

Name: _____ Phone: _____

Email: _____