

# Treasures Family Newsletter

December 2024

## Important Dates

<b>Dec 6</b>	EEP/Jr High <i>ATTEND</i>
<b>Dec 13</b>	EEP/Jr High <i>OFF</i>
<b>Dec 19</b>	Last Day of Classes
<b>Dec 20</b>	Non-Instructional Day <i>No Classes, No SAS</i>
<b>Dec 23</b>	Winter Break <i>Classes resume for all children/students on January 6, 2025</i>
<b>Dec 25</b>	Christmas Day <i>Schools Closed</i>
<b>Dec 26</b>	Boxing Day <i>Schools Closed</i>

## Inside

Executive Message .....	2
Family Support.....	4
Important Dates .....	6

## Renfrew Educational Services

# Gala

## Building our Future

*March 13, 2025*

**BMO Centre**

Stampede Park, 20 Round Up Way SE

**5:30pm:** Cocktails & Auction Viewing

**7:00pm:** Dinner & Program

*Dress: Semiformal*



# Executive Message

## News from the Executive Team



**Janice McTighe**  
Executive Director



**Kim LaCourse**  
Associate Executive Director



**Nicki Wilson**  
Associate Executive Director

## Merry Christmas & Happy Holidays!

At this special time of year, we take time to reflect, share and celebrate family traditions. At Renfrew we are very fortunate to spend our days with special children and their families. We are also privileged to have dedicated Renfrew teams, as well as generous parent volunteers, Board Members, and committee members, who share their talents by supporting our Parent Advisory Councils, fundraisers and various school events.

Renfrew is one of the sponsors at the Bearspaw European Christmas Market being held on **November 29, 30, December 1, and December 6, 7, 8**. As you know our new Legacy school is being built right next to the Bearspaw Lifestyle Centre where the Christmas market is being held. We encourage you to visit the market they will have exciting family events happening as well as a wealth of vendors to help with all your holiday shopping.

We would also like to take this opportunity to wish all of you a safe and festive holiday from our Renfrew family to your family.

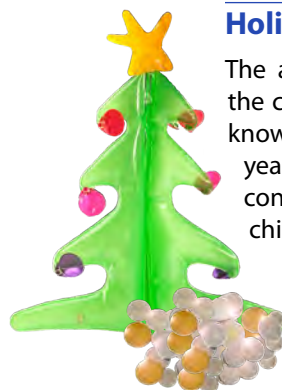
### Charity Gala

With Renfrew's Charity Gala just three months away we need your help! We rely on our families to help support the Gala by donating a silent auction item, cash donation, purchasing a ticket to the event or connecting us to a possible sponsor. Ticket information can be accessed by clicking on the link below. This is a major fundraiser for Renfrew and this year's proceeds will go towards the building of our Legacy school in Bearspaw.

At the back of Treasures, you will find all the information you will need to obtain a silent auction item as well as our contact information. Please do not hesitate to call if you have any questions.

### Givergy Fundraising Website:

[Helping Kids SOAR Gala – Building Our Future](#)



### Holiday Helping Project

The annual Holiday Helping Project has a few days left in the campaign to raise funds to support Renfrew families. We know at this time there are more families in need than past years. Please reach out and donate if you are able - your contributions will make a difference in the lives of the children and families at Renfrew!

## Donations – United Way

We would like to take this opportunity to express our sincere thanks to families who were able to direct their United Way donations to Renfrew Educational Services. We know that many Calgary businesses matched their employees' donations, which increase the amount we receive. Also, many businesses acknowledge the volunteer efforts of their employees and donate on behalf of the employees' volunteer hours at their children's schools. We truly appreciate the continuous support of parents.

## Winter Festival Celebrations

Our classrooms/sites will be planning special winter celebrations. Please watch for information from your child's teacher regarding any special events.

## Registration for the 2025-2026 School Year

Our registration process for our families will begin within the next few weeks. You will be contacted by the Manager of your child's site regarding online access to the registration package. At this time, we are offering internal registration for returning families before we open the registration to the community. If you have any questions or require support to complete online registration, please contact the Manager of your site.

Word of mouth is often the best referral method; however, we know that technology plays a large role as well and we are asking you to tell your friends and families looking for specialized programs how happy you are with Renfrew. Please take a few minutes to complete a Google review by following this link, [Google Review](#) (Or right click and select "copy hyperlink" and paste it into your browser's address bar.)

## Thank You

Again, parents, please accept our heartfelt thanks for your continued support and for entrusting your children to our care. Our doors are always open. We are available to meet with parents at any time. Please feel free to contact us:

### Janice McTighe

Executive Director

T 403.219.5388 F 403.291.2499

[janicemctighe@renfreweducation.org](mailto:janicemctighe@renfreweducation.org)

### Kim LaCourse

Associate Executive Director

T 403.219.5386 F 403.291.2499

[kimlcourse@renfreweducation.org](mailto:kimlcourse@renfreweducation.org)

### Nicki Wilson

Associate Executive Director

T 403.291.5038 ext. 1643

[nickiwilson@renfreweducation.org](mailto:nickiwilson@renfreweducation.org)

**Warmest Regards,**

*Janice, Kim & Nicki*



Please follow us on all social media platforms and take a moment to write a Google Review so we can share with the community the experiences of our families first-hand. Simply search for Renfrew Educational Services on Google and look for the "Write a review" button or click here: [Google Review](#). Please share your happiness with our programs for others who are looking.





# Family Support

## What is Family Support?

Renfrew's Family Support Program is dedicated to the well-being of the families and children we serve. Our program offers a variety of family-centred services to facilitate connections and to support families in the home, neighborhood and community. Every Renfrew school location has a Family Support Worker.



### THANK YOU! Holiday Helping Project 2024

Family Support would like to thank everyone for their generous contributions to the Holiday Helping Project this year! Your donations will be used to purchase gift cards for Renfrew families to brighten up their holiday season.



### Holiday Support

2024 has been a challenging year and we recognize that many families may be struggling financially with the rising costs of living in Calgary. Do you need support to connect with holiday food or gifts this year? If so, please reach out to the Family Support Worker at your child's Renfrew location.

### All Library Locations are Open

From drop-in programs, digital eResources, meeting room access, and more, there's so much you can access with your free Calgary Public Library card. For a list of all available services, please visit our website: <https://www.calgarylibrary.ca/your-library/comeback/>

### Winter Wonderland at the Library

The weather outside may be frightful, but the Library is still delightful! The Library's annual Winter Wonderland will feature seasonal fun during the month of December. It will kick off with the Mayor's Holiday Storytime at Central Library on Saturday, December 7, with plenty of more family-friendly fun in the weeks to follow. Learn more about Winter Wonderland and Library events on our website: <https://www.calgarylibrary.ca/events-and-programs/events/>

### Enjoy Programs and Performances from the Musical Artist in Residence

Cam Buie, the 2024 Musical Artist in Residence, is an experienced performer who has been connecting with the community through his music. Cam's unique style blends classical music with a modern electronic sound — something that can be enjoyed by people of all ages. Cam is happy to discuss technique, songwriting, performance, and other aspects of the music industry with people of all musical abilities. Visit him during drop-in hours or watch him perform: <https://www.calgarylibrary.ca/events-and-programs/arts-and-culture/musical-artist-in-residence>

*Renfrew's Family Support Program is dedicated to the well-being of the families and children we serve. Our program offers a variety of family-centred services to facilitate connections and to support families in the home, neighbourhood and community. Every Renfrew school location has a Family Support Worker.*

### The Family Support Team

The Family Support team is available if you have questions, need resources, are looking for ways to increase your social connections or if you would just like to talk. The following is a list of the Family Support Workers and their contact information.

#### Renfrew Schools



**Cory Francis**  
Family Support Worker  
**Team Lead**

Janice McTighe Centre  
403.291.5038 ext. 1351  
[cfrancis@renfreweducation.org](mailto:cfrancis@renfreweducation.org)



**Sarah Livingstone**  
Family Support Worker

Bowness Centre  
403.291.5038 ext. 1811  
[slivingstone@renfreweducation.org](mailto:slivingstone@renfreweducation.org)



**Emily Stevenson**  
Family Support Worker

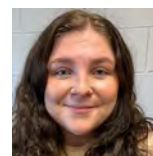
Child Development Centre  
403.291.5038 ext. 1244  
[estevenson@renfreweducation.org](mailto:estevenson@renfreweducation.org)



**Emily Voisey**  
Family Support Worker

Thomas W. Buchanan Centre  
403.291.5038 ext. 1606  
[evoisey@renfreweducation.org](mailto:evoisey@renfreweducation.org)

#### First Nations



**Alexa Connolly**  
Family Support Worker

Bighorn Health Centre  
Mini Thni / Stoney Health (Morley)  
[aconnolly@renfreweducation.org](mailto:aconnolly@renfreweducation.org)



# COFFEE & CHAT GROUPS

Family Support offers a variety of Coffee & Chat Groups during the school year.  
This is a great opportunity to connect with other Renfrew parents and guardians!

Please reach out to the Family Support Worker at your Renfrew location if you require help with transportation.

## Telus Spark Science Centre [www.sparkscience.ca](http://www.sparkscience.ca)

220 St. George's Drive NE

### Thursday, December 12

Morning group  
9:15am

Afternoon group  
1:00pm

Register by December 5

### Wednesday, January 22

Morning group  
9:15am

Afternoon group  
1:00pm

Register by January 15



Renfrew is pleased to announce that we are part of Telus Spark's Community Connections Program again this year! This partnership allows Renfrew to access a limited number of tickets to the Telus Spark Science Centre. If you are interested in exploring this exciting facility with your child(ren), please join us on one of these dates! Renfrew will provide a limited number of free admission tickets.

### Heat Up the Holidays

Don't let the cold weather freeze over your holiday spirit, shake off the snow and turn up the heat at TELUS Spark this festive season! From thaw-dropping holiday lights to sizzlin' science experiments and even a bark-tacular show - there's something for everyone to melt over. Unlike those other holiday experiences, where you have to put on more layers than the Earth's core to see festive lights, Spark has the heat cranked so you and the crew can celebrate in comfort - no snowsuit required!

- **PARKING:** Please note that you will be required to pay for parking (\$10/day) if you choose to park in the Telus Spark parking lot. You can pay for parking at the machine located beside the front doors or you can download the ParkPlus App and prepay for your parking session (Zone 8310).
- **PLEASE NOTE:** Adults must come with a child and children must be accompanied by an adult. Parents and guardians are responsible for transporting and supervising their children. If you require help with transportation, please contact the Family Support Worker at your Renfrew school.

Registration is limited!

Please register by emailing Sarah Livingstone at  
[sarahlivingstone@renfreweducation.org](mailto:sarahlivingstone@renfreweducation.org)

### When registering, it is important to include the following information:

- Which date are you registering for?
- Which group are you registering for? Morning or afternoon?
- Your name and the name of your Renfrew child
- The Renfrew location that your child attends
- How many people are attending
- The ages of all people attending
- If you are bringing a support aide

## JMC Coffee & Chat

2050 21 Street NE

### Wednesday, January 15

1:00-2:30pm



Join us for an adults-only coffee group as we welcome the new year! This is the perfect opportunity to meet other parents & guardians while enjoying some light refreshments. Treat yourself to an hour of supportive conversation as we share tips and strategies for prioritizing our own health and wellness as we head into 2025. Participants will receive a small planning tool to support you on this journey!

Please register by January 8

by emailing Sarah Livingstone at  
[sarahlivingstone@renfreweducation.org](mailto:sarahlivingstone@renfreweducation.org)

In your email, please include the number adults who will be attending this group.

## School Information Sessions

Are you wondering where your child with special needs will go when he or she leaves Renfrew? Do you have questions about the process of transitioning to a new school? You are not alone! Join us for our **School Information Sessions**.

### ➤ **December 11, 2024 9:30 – 11:00am**

- Online using ZOOM
- Register by **December 4, 2024**

### ➤ **January 16, 2025 6:30 – 8:00pm**

- Online using ZOOM
- Register by **January 9, 2025**

### To Register for Information Sessions:

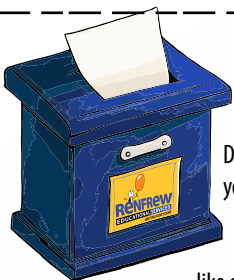
- Email **Sarah Livingstone** at [sarahlivingstone@renfreweducation.org](mailto:sarahlivingstone@renfreweducation.org)
  - Please include the date of the session, your name, your child's name, and Renfrew location in your email.

If you have any barriers to attending these sessions, please contact the Family Support Worker at your Renfrew school.

# Important Dates

## December 2024

Sun	Mon	Tue	Wed	Thu	Fri	Sat
1	2	3	4	5	6 EEP/Jr High ATTEND	7
8	9	10	11	12	13 EEP/Jr High OFF	14
15	16	17	18	19 Last Day of Classes	20 Non-Instructional Day No Classes, No SAS	21
22	23 Winter Break	24 Winter Break	25 Christmas Day Schools Closed	26 Boxing Day Schools Closed	27 Winter Break	28
29	30 Winter Break	31 Winter Break				
<div>Next Month:</div> <div> <div>Jan 1 Winter Break</div> <div>Jan 2 Winter Break</div> <div>Jan 3 Winter Break</div> <div>Jan 6 Classes Resume for all children</div> <div>Jan 10 EEP/Jr High ATTEND</div> <div>Jan 17 EEP/Jr High OFF</div> <div>Jan 24 Non-Instructional Day No Classes, No SAS</div> <div>Jan 31 EEP/Jr High ATTEND</div> <div>Jan 1 New Year's Day Schools Closed</div> </div>						



## Renfrew's Suggestion Box

Do you have an idea or suggestion you want to pass on to us? A question that you want answered? Something about Renfrew that you like or don't like?

---

---

---

---

Email your suggestion to:

**Renfrew@renfreweducation.org**

or use this form, remembering to include your name and contact information.

Name: \_\_\_\_\_ Phone: \_\_\_\_\_

Email: \_\_\_\_\_

# Renfrew Educational Services

## Gala Building our Future

**Renfrew Educational Services Foundation**

Charitable Registration No. 777625492 RR0001

Thursday, March 13, 2025

Renfrew Educational Services offers a broad range of specialized programs and is an acknowledged leader in program development for children and students with disabilities. Renfrew is also known for its responsiveness to the needs of families and the community which has led us to the undertaking of our Capital Campaign. We are raising funds to expand our services to Junior & Senior High School. To date we have raised just over \$19 million dollars towards our goal of \$30 million dollars.

Renfrew's Charity Gala is one of Calgary's premiere charity fundraising events. Over the years, this event has raised close to \$8.5 million dollars for school buildings, buses, specialized rooms, adaptive equipment and specialized programs and services. At this year's Gala we will be celebrating our 26<sup>th</sup> Annual Gala "Building Our Future". Our event will be held on **March 13, 2025**, at the BMO Centre at Stampede Park.

We would love for you to become a sponsor at our event. For enquiries about sponsorship opportunities, contact **Janice McTighe, Executive Director, [janicemctighe@renfreweducation.org](mailto:janicemctighe@renfreweducation.org) or 403.973.2278**. For those of you who have supported us in the past, we greatly appreciate your support and ask that you consider becoming a sponsor for this year's event.

For sponsorship or ticket information, visit our website at **[www.renfreweducation.org](http://www.renfreweducation.org)**.

Our Gala features an amazing silent and live auction. If you wish to donate an item or have questions about the auction, contact **Jacki Cassidy, Event Manager, [jackicassidy@renfreweducation.org](mailto:jackicassidy@renfreweducation.org)**.

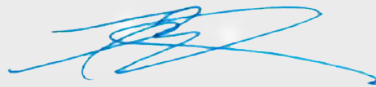
On behalf of all the children/students, families and staff of Renfrew Educational Services, we invite you to support the development of our new Flagship school as we SOAR to grade 12.

Yours truly,



**Jim Reid**

Chairman, Foundation Board of Directors



**Tom Buchanan**

Chairman, Society Board of Directors





## Item Information Form

Detailed Item Description:

Item can be exchanged for different size: ☐ Yes ☐ No

Item Value: \$ \_\_\_\_\_

Tax Receipt:

An **invoice or receipt** clearly indicating the value of the donation **must** accompany the **donated item** or a tax receipt will not be issued.

**Please note:** When requesting a tax receipt for an invoiced item, the receipt can **only** be issued to the name that appears on the invoice.

**Canada Customs and Revenue Agency regulations prohibit issuance of tax receipts for donation of services. (hotel rooms, use of a condo, aesthetic services, massage etc.)**

Tax Receipt Required: ☐ No ☐ Yes

Donated by: \_\_\_\_\_

Contact Person *(if donor is a business)*: \_\_\_\_\_

Donor's Mailing Address: \_\_\_\_\_

City \_\_\_\_\_ Province \_\_\_\_\_

Postal Code \_\_\_\_\_

Telephone \_\_\_\_\_ FAX \_\_\_\_\_

Email \_\_\_\_\_

Renfrew Contact Person: \_\_\_\_\_ Telephone: \_\_\_\_\_

**Please ensure that every space above is completed.**

### Donation Deadline:

January 24<sup>th</sup>, 2025

### Event Information:

Renfrew Educational Services Foundation  
26<sup>th</sup> Annual Gala: "Building Our Future"  
March 13<sup>th</sup>, 2025  
BMO Centre - Stampede Park

### Forward Item and Form To:

26<sup>th</sup> Annual Charity Gala  
Renfrew Educational Services Foundation  
2050 – 21 Street NE  
Calgary, Alberta, T2E 6S5

### Enquiries:

Jacki Cassidy  
T 403.291.5038 ext 1396  
F 403.291.2499

Office Use Only: Item # \_\_\_\_\_

Charitable Registration No. 777625492 RR0001