

Treasures Family Newsletter

May 2025

Magna Insurance Charity Golf Classic

One of the major sponsors at Renfrew's very successful gala this past March was Magna Insurance Group. Magna Insurance Group is a Calgary-based insurance brokerage that has been supporting Renfrew Educational Services since Magna's inception in 2017. In addition to purchasing a school bus for Renfrew, Magna has been a perennial sponsor at our annual galas and holds an annual golf tournament in support of Renfrew. All proceeds from its tournaments go to the Foundation.

The 5th Annual Magna Insurance Charity Golf Classic will be held on Thursday, August 14, 2025 at Bearspaw Golf Club. The tournament provides a great opportunity to support Renfrew by registering for golf or becoming a tournament sponsor. Access to the Tournament Registration is available through the link below. Your support would be greatly appreciated.

In conjunction with the tournament, Magna holds an online Silent Auction. Details about the auction will be available in early August. Anyone interested in donating Silent Auction items, is asked to contact Maureen Sikorski - msikorski@magnains.ca, 403.930.0464.



**Magna Insurance
Charity Golf Classic**

5th Annual

**REGISTRATION
NOW OPEN**

Thursday, August 14, 2025

In Support of:



Bearspaw Golf & Country Club
Calgary, Alberta

7:30am Registration
9:00am Shotgun Start
2:00pm Lunch

magna Charity Golf Classic

Inside

Executive Message	2
Family Support.....	3
Important Dates	5
Renfrew's Suggestion Box.....	5

Important Dates

May 2	EEP/Jr High	OFF	May 19	Victoria Day	Schools Closed
May 9	EEP/Jr High	ATTEND	May 23	EEP/Jr High	ATTEND
May 11	Mother's Day		May 30	EEP/Jr High	OFF
May 16	EEP/Jr High	OFF			

Executive Message

News from the Executive Team

Spring is in the air!

Our classrooms are alive with the beautiful signs of spring. We have exciting events and activities planned for our last two months of school. At all our sites, we will take advantage of the beautiful weather as we plan to take many of our classroom centres outside to enjoy.

Please watch for email updates from the classroom teachers about the following activities at your child's school over the next two months:

- ▶ **Bowness Centre:** Butterfly larvae, Nanny McCluckins duck hatching, and the Soccer Centre.
- ▶ **Janice McTighe Centre:** Butterfield Acres, Nanny McCluckins duck hatching, Movie Night, Butterflies and Wings, Jr/Sr Leaders swimming, and We Rock the Spectrum.
- ▶ **Child Development Centre:** Butterfly larvae, Nanny McCluckins duck hatching, Christopher Cool the magician, Soccer Centre, Inglewood Bird Sanctuary, and the Bow Habitat Fish Hatchery.
- ▶ **Thomas W. Buchanan Centre:** Book Week, Growing Smiles fundraiser, Stampede Day welcoming Butterfield Acres and Calgary Stampede Mascots, and to celebrate National Indigenous Peoples Day and honour their culture and heritage the Pipestem Creek Dance Group will perform and share their traditions, stories, and art with the school community.

Thank You, Parents

May and June are months we take the time to thank our parents for all your support over the course of the year. We know this year we had very active Parent Advisory Councils with exciting fundraisers and wonderful activities and events for the children and students. Our ECS classrooms will be planning a special 'Come and Play' with me date inviting parents into their classroom while our Grades classrooms will invite families to explore student leaving through interactive showcases. Please watch your inbox for information from your child's classroom teacher.

The Elementary Programs at both JMC and TBC will host their Farewell Celebrations for our grade six age students on June 19th. Again, please look for detailed information from the classroom teachers about this exciting event in June.

Family Day

We are excited to share our year end Family Day celebration on June 14th, 2025. Each school site will host a family fun day from 10:00-12:00. Please look for information over the next few weeks.

Transitions to New Schools

We realize that at this time of year, many of our children are preparing to move on to their community schools or Renfrew's Elementary Education program. The decisions have been finalized for placement in Renfrew's Elementary program. We have many requests and, unfortunately, a limited number of available spaces and we are simply unable to accommodate every request for placement in this program.

Remember, our Family Support team and Site Managers are happy to help with further placement planning. Please feel free to contact us anytime.



Janice McTighe
Executive Director



Kim LaCourse
Associate Executive Director



Nicki Wilson
Associate Executive Director

Social Media & Web Page

There's always something going on at Renfrew and we want others to know what we're up to! Our Facebook page (search Renfrew Educational Services), Instagram (renfreweducationservices) and LinkedIn (search Renfrew Educational Services) are used to communicate messages, fun things happening around our locations, updates about our programming and services and general topics of interest. Check us out online - like, share and follow so you can stay 'in-the-know'.

Thank You

Thank you sincerely for the many, many ways you help Renfrew and for trusting us with your children. Our doors are always open. We are available to meet with our parents at any time. Please feel free to contact us.

Janice McTighe
Executive Director

T 403.219.5388 F 403.291.2499
janicemctighe@renfreweducation.org

Kim LaCourse

Associate Executive Director

T 403.219.5386 F 403.291.2499
kimlacourse@renfreweducation.org

Nicki Wilson

Associate Executive Director

T 403.291.5038 ext. 1643
nickiwilson@renfreweducation.org

Warmest Regards,

Janice, Kim & Nicki

Family Support

Renfrew's Family Support Program is dedicated to the well-being of the families and children we serve. Our program offers a variety of family-centred services to facilitate connections and to support families in the home, neighborhood and community. Every Renfrew school location has a Family Support Worker.

Movie Night at JMC

Your family is invited to a fun movie night hosted by our Student Leaders at JMC! Join us on June 5th to watch the animated movie "Luca". This is a great opportunity to meet other Renfrew families while enjoying a night out of the house! Families that attend will be entered into a draw for some fun prizes.

Thursday, June 5th

Renfrew's Janice McTighe Centre (2050 21 Street NE)

Doors open at 6:15pm Movie starts at 6:45pm

Our student leaders will be offering snack items for sale.

All proceeds will go towards the Leaders Fund!

Please register by May 29th by emailing the Family Support team

familysupport@renfreweducation.org



Community Connect Event!

Hosted by: Muhsen Canada

Date: Saturday, May 24th, 2025

Time: 1:30 - 4:00pm

Location: OBK Gymnasium (225 28 Street SE, Calgary)



Are you living with a disability or caring for someone who is? We invite adults and children with disabilities, along with their families, to join us for a special event hosted by Muhsen Canada. This is a wonderful opportunity to connect with local resources and community leaders and to learn how our community is ready to provide support!

To learn more about Muhsen Canada, please visit <https://muhsen.org/canada/>.

Renfrew's Family Support Program is dedicated to the well-being of the families and children we serve. Our program offers a variety of family-centred services to facilitate connections and to support families in the home, neighbourhood and community. Every Renfrew school location has a Family Support Worker.

The Family Support Team

The Family Support team is available if you have questions, need resources, are looking for ways to increase your social connections or if you would just like to talk. The following is a list of the Family Support Workers and their contact information.

Renfrew Schools



Cory Francis
Family Support Worker
Team Lead

Janice McTighe Centre
403.291.5038 ext. 1351
cfrancis@renfreweducation.org



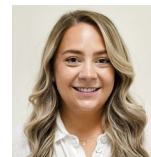
Sarah Livingstone
Family Support Worker

Bowness Centre
403.291.5038 ext. 1811
slivingstone@renfreweducation.org



Emily Stevenson
Family Support Worker

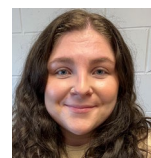
Child Development Centre
403.291.5038 ext. 1244
estevenson@renfreweducation.org



Emily Voisey
Family Support Worker

Thomas W. Buchanan Centre
403.291.5038 ext. 1606
evoisey@renfreweducation.org

First Nations



Alexa Connolly
Family Support Worker

Bighorn Health Centre
Mini Thni / Stoney Health (Morley)
aconnolly@renfreweducation.org



COFFEE & CHAT GROUPS

Family Support offers a variety of Coffee & Chat Groups during the school year. This is a great opportunity to connect with other Renfrew parents and guardians!

Please reach out to the Family Support Worker at your Renfrew location if you require help with transportation.

Telus Spark Science Centre www.sparkscience.ca

220 St. George's Drive NE

Wednesday, May 21

Morning group
9:15am

Afternoon group
1:00pm



Renfrew is pleased to announce that we are part of Telus Spark's Community Connections Program again this year! This partnership allows Renfrew to access a limited number of tickets to the Telus Spark Science Centre. If you are interested in exploring this exciting facility with your child(ren), please join us on one of these dates! Renfrew will provide a limited number of free admission tickets.

- ▶ **PARKING:** Please note that you will be required to pay for parking (\$12/day) if you choose to park in the Telus Spark parking lot. You can pay for parking at the machine located beside the front doors or you can download the ParkPlus App and prepay for your parking session (Zone 8310).
- ▶ **PLEASE NOTE:** Adults must come with a child and children must be accompanied by an adult. Parents and guardians are responsible for transporting and supervising their children. If you require help with transportation, please contact the Family Support Worker at your Renfrew school.

Registration is limited!

Please register by **May 14** by emailing
familysupport@renfreweducation.org

When registering, it is important to include the following information:

- ▶ Which group are you registering for? Morning or afternoon?
- ▶ Your name and the name of your Renfrew child
- ▶ The Renfrew location that your child attends
- ▶ How many people are attending
- ▶ The ages of all people attending
- ▶ If you are bringing a support aide



Red Dress Day is May 5

Red Dress Day honours the memories of missing and murdered Indigenous women, girls, and two-spirit people (MMIWG2S+) across Canada. The Library will recognize Red Dress Day with displays at all Library locations from April 25 – May 7. There will also be programming and an art installation at Central Library.

Read more:

<https://www.calgarylibrary.ca/connect/indigenous-services/mmiwg2s>

Discover the Literary Arts with LitCon 2025

Calgary Public Library's LitCon is coming back to classrooms with programs led by literary artists. The virtual and in-person sessions throughout the month of May will inspire students to explore writing, drawing, poetry, music, comics, oral storytelling, and more.

Learn more:

<https://www.calgarylibrary.ca/events-and-programs/events/litcon>

Creative and STEM Explorers

Learn something new and discover your creative side with a wide range of virtual programs. Kids ages 6 – 12 will have lots of fun as they enjoy guided drawing classes, make paper portraits, learn about different species in Alberta, and so much more.

Register here:

<https://www.calgarylibrary.ca/events-and-programs/programs?query=explorers>

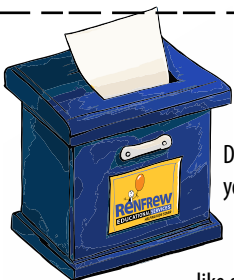
Please follow us on all social media platforms and take a moment to write a Google Review so we can share with the community the experiences of our families first-hand. Simply search for Renfrew Educational Services on Google and look for the "Write a review" button or click here: [Google Review](#). Please share your happiness with our programs for others who are looking.



Important Dates

May 2025

Sun	Mon	Tue	Wed	Thu	Fri	Sat
				1	2 EEP/Jr High OFF	3
4	5	6	7	8	9 EEP/Jr High ATTEND	10
11 Mother's Day	12	13	14	15	16 EEP/Jr High OFF	17
18	19 Victoria Day Schools Closed	20	21	22	23 EEP/Jr High ATTEND	24
25	26	27	28	29	30 EEP/Jr High OFF	31
Next Month: <div> <div> Jun 6 Non-Instructional Day No Classes, No SAS Jun 13 EEP/Jr High ATTEND Jun 14 Renfrew Family Day </div> <div> Jun 15 Father's Day Jun 19 Grade 6 Farewell Jun 20 EEP/Jr High OFF </div> <div> Jun 27 EEP/Jr High ATTEND Last Day of Classes Jun 30 Non-Instructional Day No Classes, No SAS </div> </div>						



Renfrew's Suggestion Box

Do you have an idea or suggestion you want to pass on to us? A question that you want answered? Something about Renfrew that you like or don't like?

Email your suggestion to:

Renfrew@renfreweducation.org

or use this form, remembering to include your name and contact information.

Name: _____ Phone: _____

Email: _____