

Treasures Family Newsletter

February 2026



Please Join Us

MARCH 12, 2026

HELPING KIDS SOAR GALA BUILDING OUR FUTURE

BMO Centre

Stampede Park, 20 Round Up Way SE

5:30 pm: Cocktails & Auction Viewing

7:00 pm: Dinner & Program

Dress: Semiformal



THE THREE SISTERS CENTRE

Important Dates

Feb 5	Progress Reports go home
Feb 6	EEP/Jr High OFF
Feb 11	Parent/Teacher Conferences EVENING
Feb 12	Non-Instructional Day No Classes, No SSP Parent/Teacher Conferences DAY
Feb 13	Non-Instructional Day No Classes, No SSP
Feb 16	Alberta Family Day Schools Closed
Feb 20	EEP/Jr High ATTEND
Feb 27	EEP/Jr High OFF

Inside

Executive Message	2
Sparkling Water Fundraiser.....	3
"Together for a Bright Future" limited edition prints.....	4
Family Support.....	5
Important Dates	7

Executive Message

News from the Executive Team



Kim LaCourse
Executive Director - School Operations



Nicki Wilson
Executive Director - Community Services

We're All in This Together – Raising Funds and Awareness



The theme of our upcoming gala continues to be Building Our Future, as we raise vital funds to support the development of the Three Sisters Centre. We invite you to be part of the success of this special event.

To date, we have sold over 620 tickets, and our goal is to welcome 850 guests, matching last year's incredible attendance. If you are interested in purchasing a ticket or can connect us with a potential sponsor, please reach out to **Janice McTighe** at janicemctighe@renfreweducation.org.

As we get closer to the event, there will be additional ways to support the gala through our auction and raffle. Raffle tickets will be available, and auction items will be released for bidding through the Givergy platform.

This year's raffle will feature:

- ▶ A 50-bottle Wine & Spirits Tree
- ▶ A dinner for eight at Mercato Restaurant, complete with wine pairings

Both the raffle and auction will be open to the public, so when the link is shared, we encourage you to pass it along to family and friends.

Givergy Fundraising Website:

- ▶ [Helping Kids SOAR Gala – Building Our Future](#)

Registration

Preschool and Kindergarten Registration

Registration for Preschool and Kindergarten programs for children with disabilities continues at all Renfrew school sites for September 2026. If you have questions, please contact the Manager at your child's location.

Elementary Education Program Registration

Registration also continues for our Elementary Education Program at the Janice McTighe Centre and Thomas W. Buchanan Centre.

Due to high interest and limited spaces, placement decisions are based on several factors, including:

- ▶ Creating a balanced classroom environment
- ▶ Representation from all Renfrew school sites
- ▶ Parent commitment to Renfrew Educational Services
- ▶ Commitment to annual school fees of \$4,500

We recognize that placement decisions can be difficult, and we truly appreciate your patience and understanding throughout this process.

Alberta Family Day

February 16 is Alberta Family Day. We wish you a joyful day spent celebrating, connecting, and creating wonderful memories with your family.

Contact Information Updates

It is very important that we have current contact information on file. If there have been any changes to your:

- ▶ Home address
- ▶ Home, work, or cell phone numbers
- ▶ Emergency contact information

Please notify the Manager at your child's location as soon as possible.

Thank You

Thank you sincerely for the many ways you support Renfrew and for trusting us with your children. Our doors are always open, and we are always available to meet with parents. Please feel free to reach out at any time.

Kim & Nicki

Kim LaCourse

Executive Director - School Operations
T 587.713.4762 F 403.291.2499
kimlacourse@renfreweducation.org

Nicki Wilson

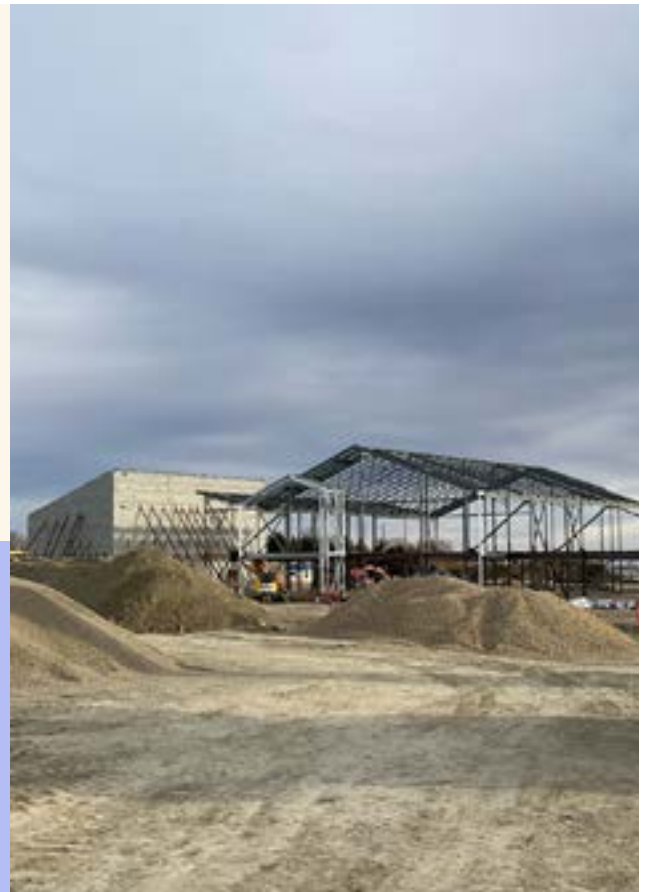
Executive Director - Community Services
T 587.507.4872
nickiwilson@renfreweducation.org



Sparkling Water Fundraiser

The Three Sisters Centre: Building Brighter Futures

This fundraising campaign supports the creation of Renfrew's new Three Sisters Centre — a purpose-built facility that will expand our specialized programming from ECS through Grade 12. This new space will allow us to serve students longer, support their growth at every stage, and continue delivering the life-changing programs that define Renfrew.



Support Renfrew with Refreshment!

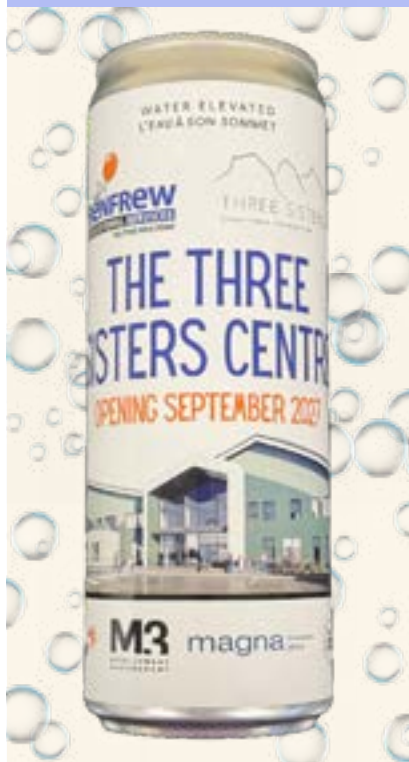
This fundraiser features North Water — premium Canadian sparkling water sourced straight from the Rocky Mountains.

By purchasing, you're not just quenching your thirst — you're helping support Renfrew's programs and students.

Pricing:

- 6-Pack – \$18
- 12-Pack – \$36
- Flat of 24 – \$72

Every sip makes a difference — so stock up, stay hydrated, and support a great cause!



Scan QR code to place your order!

Or Visit <https://forms.gle/7jzn8EirCMjDqhKz5>

You don't need to place an order to support the TSC Capital Campaign

You can e-transfer a donation to foundationdonations@renfreweducation.org. When you e-transfer, please indicate that your donation is for the "TSC Capital Campaign". To receive a tax receipt, your donation must be \$20 or more and you must clearly indicate your **legal name, address and email address**

“Together for a Bright Future”

Paul Van Ginkel created this 48” X 72” oil painting for Renfrew. The original was sold at our Gala on March 13th 2025, however, the image is also available in limited edition canvas (36” X 54”) and paper prints (15” X 23”). All proceeds from these sales are donated to Renfrew.



Follow the link or scan the QR code for details: <https://paulvanginkel.com/product/together-for-a-bright-future-2/>



Please follow us on all social media platforms and take a moment to write a Google Review so we can share with the community the experiences of our families first-hand. Simply search for Renfrew Educational Services on Google and look for the “Write a review” button or click here: [Google Review](#). Please share your happiness with our programs for others who are looking.



Family Support

What is Family Support?

Renfrew's Family Support Program is dedicated to the well-being of the families and children we serve. Our program offers a variety of family-centred services to facilitate connections and to support families in the home, neighbourhood and community. Every Renfrew school location has a Family Support Worker.



COFFEE & CHAT GROUP

Family Support offers a variety of Coffee & Chat Groups during the school year. This is a great opportunity to connect with other Renfrew parents and guardians!

Please reach out to the Family Support Worker at your Renfrew location if you require help with transportation.

Gratitude Journaling

Janice McTighe Centre (JMC) at 2050 21 Street NE

Wednesday, February 18

Time: 9:00 - 11:00am (morning group) or 1:00 - 3:00pm (afternoon group)



Are you curious about gratitude journaling? Are you looking for an opportunity to meet other Renfrew parents and guardians? If so, please join us as we take a break from our busy lives to connect with each other and explore what we are grateful for! We are happy to welcome back Ashley, a Renfrew parent, as the facilitator of this group. We look forward to learning from her knowledge of gratitude journaling and the benefits she has experienced from it.

Renfrew will provide gratitude journals, supplies and refreshments for this lighthearted **adult-only** activity. Every participant will receive a small gift in celebration of Lunar New Year as well!

Please register by **February 11, 2026** by emailing the
Family Support team at familysupport@renfreweducation.org

When registering, it is important to include the following information:

- Which date are you registering for?
- Which group are you registering for? Morning or afternoon?
- Your name and the name of your Renfrew child
- The Renfrew location that your child attends

Renfrew's Family Support Program is dedicated to the well-being of the families and children we serve. Our program offers a variety of family-centred services to facilitate connections and to support families in the home, neighbourhood and community. Every Renfrew school location has a Family Support Worker.

The Family Support Team

The Family Support team is available if you have questions, need resources, are looking for ways to increase your social connections or if you would just like to talk. The following is a list of the Family Support Workers and their contact information.

Renfrew Schools



Cory Francis
Family Support Worker
Team Lead

Janice McTighe Centre
587.287.5746
cfrancis@renfreweducation.org



Sarah Livingstone
Family Support Worker

Bowness Centre
587.287.5746
slivingstone@renfreweducation.org



Emily Stevenson
Family Support Worker

Child Development Centre
587.287.5746
estevenson@renfreweducation.org



Emily Voisey
Family Support Worker

Thomas W. Buchanan Centre
587.287.5746
evoisey@renfreweducation.org

First Nations



Alexa Mogg
Family Support Worker

Big Horn Health Centre
Mini Thni/Stoney Health (Morley)
amogg@renfreweducation.org

INFORMATION SESSION

The Parts of Communication: Speech, Language, Social Communication and How They Interact

Understanding the parts of communication is essential when parenting young children. Please join us as we talk about the differences between speech, language, and pragmatic/social communication skills, and how they interact. We will also offer a few universal strategies to help you on your parenting journey! This session will be facilitated by **Rebecca Cooper-Cunningham**, one of Renfrew's registered Speech Language Pathologists, as well as an SLP student, Bronte Allegro.

Wednesday, February 25, 2026

9:30am - 11:00am

Virtual meeting on Zoom

.....
Please register by **February 18, 2026** by
emailing the Family Support team at
familysupport@renfreweducation.org
.....

- When you register, please include your full name, your child's name and the Renfrew location your child attends.

DID YOU KNOW?

Did you know that Autism Calgary hosts a variety of social events and information sessions for parents and guardians of children with autism? Visit www.autismcalgary.com for more details!

- Parent to Parent Coffee Support
- Keeping It Together (KIT) - Mom's Self-Care Group
- Keeping It Together (KIT) - Mom's Coffee Support Meet-Up at the Cornerstone Music Cafe
- Monday Drop-In for FSCD questions and application help
- Fathers' Autism Network
- And more!

FSCD MONDAYS!

Help and Information

Drop-In at Autism Calgary any Monday between 10 am and 2 pm!

autism
CALGARY
3639-26th Street, NE.

- Questions about FSCD? Or how apply?
- What kind of supports are available?
- Where do I find staff? How do I make a claim?
- Meet with a member of our support team to get answers!



Need more information? Email support@autismcalgary.com



The 2026 Family Reading Pick is *A Wrinkle in Time*

Family Reading Pick creates space for families to share in a literary adventure and read together. This year's pick is *A Wrinkle in Time* by Madeleine L'Engle. Copies of the graphic novel and regular novel are available at all Library locations, excluding Rocky Ridge and Prototype: Skyview. There will also be activity booklets available with literacy activities and discussion questions. Learn more: <https://www.calgarylibrary.ca/connect/students/parents-and-caregivers/family-reading-pick>

Freedom to Read Week is February 22 – 28

Freedom to Read Week is an annual event that encourages Canadians to think about their commitment to intellectual freedom. At Calgary Public Library, we demonstrate this commitment by providing you access to a wide -range of information that lets you form your own opinions. Learn more about the Library's commitment to intellectual freedom: <https://www.calgarylibrary.ca/about-the-library/collections-at-calgary-public-library>

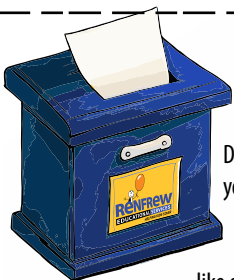
Lunar New Year at Central Library

Lunar New Year will be celebrated at the Library with both a launch event on February 15 and a closing event on March 1. These events at Central Library will feature music, performances, and cultural showcases. Find more information about the Lunar New Year celebrations: <https://www.calgarylibrary.ca/events-and-programs/programs?query=lunar+new+year>

Important Dates

February 2026

Sun	Mon	Tue	Wed	Thu	Fri	Sat
1	2	3	4	5 Progress Reports go home	6 EEP/Jr High OFF	7
8	9	10	11 Parent/Teacher Conferences EVENING	12 Non-Instructional Day No Classes, No SSP Parent/Teacher Conferences DAY	13 Non-Instructional Day No Classes, No SSP	14 Valentine's Day
15	16 Alberta Family Day Schools Closed	17	18	19	20 EEP/Jr High ATTEND	21
22	23	24	25	26	27 EEP/Jr High OFF	28
<div>Next Month:</div> <div> <div>Mar 6 EEP/Jr High ATTEND</div> <div>Mar 12 Early Dismissal no afternoon classes</div> <div>Mar 13 EEP/Jr High OFF</div> <div>Mar 20 EEP/Jr High OFF</div> <div>Mar 23 Spring Break begins (Classes/SSP Resume on April 7)</div> </div>						



Renfrew's Suggestion Box

Do you have an idea or suggestion you want to pass on to us? A question that you want answered? Something about Renfrew that you like or don't like?

Email your suggestion to:

Renfrew@renfreweducation.org

or use this form, remembering to include your name and contact information.

Name: _____ Phone: _____

Email: _____



HELPING KIDS SOAR GALA BUILDING OUR FUTURE

Thursday, March 12, 2026

At Renfrew Educational Services, we believe every child deserves the chance to reach their full potential. For more than 50 years, Renfrew has been a leader in delivering specialized programs for children with disabilities — providing not only education, but also therapies, technology, and the wrap-around supports that help children thrive.

To meet the urgent needs of families, we have launched a Capital Campaign to expand our programs into Junior and Senior High School. With the creation of the **Three Sisters Centre**, our new flagship school, students will be able to continue their learning journey at Renfrew all the way through Grade 12. We are now within reach of our goal — having raised over **\$24 million** of our **\$32 million construction target** — and your support can help us cross the finish line.

One of the cornerstones of our fundraising success is the **Renfrew Annual Charity Gala**, recognized as one of Calgary's premier fundraising events. Over the past 26 years, this Gala has raised close to \$10 million in support of new schools, buses, specialized learning spaces, adaptive equipment, and programs that change lives.

On **Thursday, March 12, 2026**, we are proud to host our **27th Annual Gala – Building Our Future** at the **BMO Centre at Stampede Park**.

We invite you to join us **as a sponsor of this milestone event**. Your partnership will directly support the creation of the **Three Sisters Centre**, ensuring that children with disabilities—and their families—have access to the opportunities, supports, and hope they deserve.

For Sponsorship Opportunities:

Janice McTighe

Founder & Strategic Advisor

janicemctighe@renfreweducation.org

403.973.2278

For Tickets & Event Info:

www.renfreweducation.org

For Auction Donations or Questions:

Jacki Cassidy

Event Manager

jackicassidy@renfreweducation.org

On behalf of the children, families, and staff of Renfrew Educational Services, thank you for your past generosity. We hope you will stand with us this year in building the future—as together, we help every child **SOAR to Grade 12**.

Jim Reid

Chairman, Foundation Board of Directors



HELPING KIDS SOAR GALA

BUILDING OUR FUTURE

Sponsorship Opportunities

Event Sponsor

\$ 5 0 k

- 20 Gala Guests: Preferred Seating and Wine
- Prominent Logo/Name Placement on interactive bidding technology
- Prominent Logo/Name Placement on Print, Digital, & Online Event Materials
- Recognition from the Podium
- First right of refusal to be “Event Sponsor” for following year’s Gala

Platinum Sponsors

\$ 2 5 k

- 16 Gala Guests: Preferred Seating and Wine
- Prominent Logo/Name Placement on interactive bidding technology
- Prominent Logo/Name Placement on Print, Digital, & Online Event Materials
- Recognition from the Podium

Gold Sponsors

\$ 1 2 k

- 10 Gala Guests: Preferred Seating and Wine
- Prominent Logo/Name Placement on Print, Digital, & Online Event Materials
- Recognition from the Podium

Silver Sponsors

\$ 7 k

- 10 Gala Guests
- Prominent Logo/Name Placement on Print, Digital, & Online Event Materials

For Sponsorship Opportunities, Please Contact:
Janice McTighe, Founder and Strategic Advisor
(403) 973-2278 | JaniceMctighe@renfreweducation.org