

Treasures Family Newsletter

May 2026



Important Dates

- May 1** Non-Instructional Day *No Classes, No SSP*
- May 8** EEP/Jr High *ATTEND*
- May 15** EEP/Jr High *OFF*
- May 18** Victoria Day *Schools Closed*
- May 22** EEP/Jr High *ATTEND*
- May 29** EEP/Jr High *OFF*

Inside

- Executive Message 2
- Family Support..... 3
- Sparkling Water Fundraiser..... 5
- Important Dates 6

Spring is here
- time to go
outside and play!

Executive Message

News from the Executive Team

Spring is in the Air!

Our classrooms are filled with the sights and energy of spring. As we head into the final two months of the school year, we are looking forward to a variety of exciting activities and events. Across all sites, we will take advantage of the warmer weather by bringing many classroom activities outdoors.

Please watch for updates from your child's teacher regarding upcoming events at their school:

- ▶ **Bowness Centre:** Butterfly larvae, Duck Foster program, gardening program, Water Day, Messy Sensory Play Day, and multiple field trips.
- ▶ **Janice McTighe Centre:** Butterfield Acres, Spirit Day, Sensory Exploration Day, Beach Day, Sports Day, Water Day, Stampede Princesses, and our annual partnership with Waldorf School.
- ▶ **Child Development Centre:** Butterfly larvae, duckling hatching, indoor garden, Christopher Cool the magician, We Rock the Spectrum, Inglewood Bird Sanctuary, and Parkdale Playground visits.
- ▶ **Thomas W. Buchanan Centre:** Book Week, Growing Smiles fundraiser, Western Day, Butterfield Acres, Beach Days, Wild Mint Arts, Indigenous performance, Art Showcase, Spirit Day, and duckling hatching.

Magna Insurance Charity Golf Classic

One of the major sponsors of Renfrew's highly successful gala this past March was Magna Insurance Group. Based in Calgary, Magna has been a valued supporter of Renfrew Educational Services since its founding in 2017. Their generosity has included the purchase of a school bus, ongoing sponsorship of our annual galas, and hosting a yearly golf tournament in support of Renfrew. All proceeds from these tournaments are directed to the Foundation.

The 6th Annual Magna Insurance Charity Golf Classic will take place on Wednesday, August 19, 2026, at Bearspaw Golf Club. This event offers a wonderful opportunity to support Renfrew by registering to play or becoming a tournament sponsor. We will share additional details as soon as they become available. Your support is sincerely appreciated.

In conjunction with the tournament, Magna will also host an online silent auction. More information will be released in early August. Those interested in donating items are encouraged to contact Maureen Sikorski at msikorski@magnains.ca or 403.930.0464.

Thank You, Parents

May and June are a time for us to recognize and thank our families for their ongoing support. This year, our Parent Advisory Councils have been especially active, organizing engaging fundraisers, events, and activities for our students.

Our ECS classrooms will be hosting special "Come and Play" days, inviting parents into the classroom, while our Grades programs will welcome families to interactive student showcases. Please watch for details from your child's teacher.

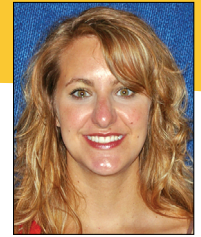
The Elementary Programs at both JMC and TBC will hold Farewell Celebrations for our Grade 6 students on June 19, 2026. More information will be shared soon.

Family Day

We are pleased to announce our year-end Family Day on June 13, 2026. Each school site will host a family fun event from 10:00am to 12:00pm. More details will be shared in the coming weeks.



Kim LaCourse
Executive Director - School Operations



Nicki Wilson
Executive Director - Community Services

Transitions to New Schools

This time of year often brings transitions, as many children prepare to move on to community schools or Renfrew's Elementary Education program. Placement decisions for Renfrew's Elementary program have now been finalized. Due to high demand and limited space, we regret that we are unable to accommodate all requests.

Our Family Support team and Site Managers are available to assist with transition planning. Please don't hesitate to reach out.

Social Media & Web Page

There is always something happening at Renfrew, and we love sharing these moments with our community. Stay connected by following us on:

- ▶ Facebook (Renfrew Educational Services)
- ▶ Instagram (@renfreweducatoralservices)
- ▶ LinkedIn (Renfrew Educational Services)

Like, share, and follow to stay up to date on news, events, and programming.

Thank You

We sincerely appreciate the many ways you support Renfrew and thank you for trusting us with your children. Our doors are always open, and we are always happy to connect with you. Please feel free to reach out at any time.

Kim & Nicki

Kim LaCourse

Executive Director - School Operations
T 587.713.4762 F 403.291.2499
kimlacourse@renfreweducation.org

Nicki Wilson

Executive Director - Community Services
T 587.507.4872
nickiwilson@renfreweducation.org

Family Support

Family Support - Year End Survey!

The Family Support team will be emailing you a Year End Survey this month! This is an important component of how we remain accountable to our funders. Please take a moment to fill it out through the link provided in the email. As you complete this short anonymous survey, please think about some of the activities, information or support you may have received from Family Support. You may have interacted with a Family Support Worker through phone calls, emails, or virtual (Zoom) calls. Additionally, you may have participated in one of our Coffee & Chats groups (Telus Spark Science Centre, play place outings, etc.) or one of our information sessions (School Transition Sessions, RDSP sessions, etc.). Information collected in the surveys (without any identifying information) is shared with The City of Calgary – Family & Community Support Services (FCSS), which is the agency that funds Renfrew’s Family Support Program. Thank you!

New Practicum Student



Please join us in welcoming **Jennifer Andric** to the Family Support Team! Jennifer is a Social Work Practicum Student from Bow Valley College and will be with us through the end of the school year. Some of you may already know Jennifer from her time as a Lunchroom Aide at the Thomas W. Buchanan Centre. Her existing connection to our students and classrooms makes her a wonderful addition to the team, and she is eager to assist with supporting our families and building community relationships.



LitCon Returns to Calgary Classrooms

Spread the word to the teachers and students that you know — it’s time to get ready for LitCon! Classrooms will enjoy engaging, curriculum-connected learning experiences with a wide-range of live presentations and online school events. This month-long literary arts festival will connect you to authors, illustrators, and storytellers. Learn more on our website: <https://www.calgarylibrary.ca/events-and-programs/events/litcon>

Celebrating Children’s Books at the Library

Children’s books are much more than a tool to learn how to read. They can take you to new places, make you laugh and cry, and can even help you understand yourself better. There are many ways that the Library celebrates children’s books and helps nurture a love of reading. Read more on our website: <https://www.calgarylibrary.ca/library-news/celebrating-childrens-books-at-calgary-public-library>

Red Dress Day is May 5

Red Dress Day honours the memories of missing and murdered Indigenous women, girls, and two-spirit people (MMIWG2S+) across Canada. Visit a Library location to learn more about Red Dress Day with interactive displays and activities that encourage the exploration of Indigenous voices and stories. Visit our website for more information: <https://www.calgarylibrary.ca/connect/indigenous-services/mmiwg2s>

Renfrew’s Family Support Program is dedicated to the well-being of the families and children we serve. Our program offers a variety of family-centred services to facilitate connections and to support families in the home, neighbourhood and community. Every Renfrew school location has a Family Support Worker.

The Family Support Team

The Family Support team is available if you have questions, need resources, are looking for ways to increase your social connections or if you would just like to talk. The following is a list of the Family Support Workers and their contact information.

Renfrew Schools



Cory Francis
Family Support Worker
Team Lead

Janice McTighe Centre
587.287.5746
cfrancis@renfreweducation.org



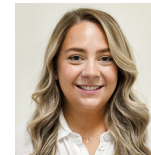
Sarah Livingstone
Family Support Worker

Bowness Centre
587.287.5746
slivingstone@renfreweducation.org



Emily Stevenson
Family Support Worker

Child Development Centre
587.287.5746
estevenson@renfreweducation.org



Emily Voisey
Family Support Worker

Thomas W. Buchanan Centre
587.287.5746
evoisey@renfreweducation.org

First Nations



Alexa Mogg
Family Support Worker

Big Horn Health Centre
Mini Thni/Stoney Health (Morley)
amogg@renfreweducation.org



COFFEE & CHAT GROUPS

Family Support offers a variety of Coffee & Chat Groups during the school year. This is a great opportunity to connect with other Renfrew parents and guardians!

Please reach out to the Family Support Worker at your Renfrew location if you require help with transportation.

Telus Spark Science Centre

220 St. George's Drive NE

Wednesday, June 3

Morning Group: 9:15am Afternoon Group: 1:00pm



Renfrew is pleased to announce that we are part of Telus Spark's Community Connections Program again this year! This partnership allows Renfrew to access a limited number of tickets to the Telus Spark Science Centre. If you are interested in exploring this exciting facility with your child(ren), please join us! Renfrew will provide a limited number of free admission tickets.

- **PARKING:** Please note that you will be required to pay for parking (\$12/day) if you choose to park in the Telus Spark parking lot. You can pay for parking at the machine located beside the front door or you can download the ParkPlus App and prepay for your parking session (Zone 8310).
- **PLEASE NOTE:** Adults must come with a child and children must be accompanied by an adult. Parents and guardians are responsible for transporting and supervising their children. If you require help with transportation, please contact the Family Support Worker at your Renfrew school.

Registration is Limited

Please register by **May 27, 2026** by emailing the Family Support team at familysupport@renfreweducation.org

When registering, please include the following:

- ▶ The group you want to join - Morning or Afternoon
- ▶ Your name and your Renfrew child's name
- ▶ The Renfrew location your child attends
- ▶ How many people are attending
- ▶ The ages of all people attending
- ▶ If you are bringing a support aide

We Rock the Spectrum

440 28 Street NE

Thursday, June 11, 9:30am



Join us at We Rock the Spectrum for a morning of indoor play! Rock the Spectrum provides an inclusive space for children of all ability levels to play and grow

together. Your whole family will have fun exploring the unique sensory-based toys and equipment, swings, zip slider, and crash pads. This facility also offers a fine motor and craft space, as well as a calming room. For more information, visit Kids Gym Indoor Playground | We Rock the Spectrum - North Calgary |. Renfrew will pay your admission. We look forward to seeing you there!

- **Please note:** adults must come with a child and children must come with an adult. Everyone must wear socks inside the play area. Parents & guardians are required to sign a waiver before their child can play in the facility.
- Please include your name, your child's name, how many children are in your group, and the ages of the children.

Please register by **Jun 4, 2026** by emailing the Family Support team at familysupport@renfreweducation.org

When registering, please include the following:

- ▶ Your name and the name of your Renfrew child
- ▶ The Renfrew location that your child attends
- ▶ How many children are in your group and the ages of the children

INFORMATION SESSIONS



Thursday, May 21, 2026 1:00 – 3:00 pm

In-person at Renfrew's Janice McTighe Centre (JMC) at 2050 21 Street NE.

Parenting children with disabilities can be stressful! Renfrew's Wellness Empowerment Program (WEP) invites you to join us as we learn about stress and explore coping strategies. This 2-hour workshop will be hosted in-person at Renfrew's Janice McTighe Centre (JMC). Participants will leave the workshop with a personalized stress management plan. This is an excellent opportunity to connect with other Renfrew parents and guardians! Refreshments will be provided.

Please register by **May 14, 2026** by emailing the Family Support team at familysupport@renfreweducation.org



Registered Disability Savings Plan

Do You Have Questions about the Registered Disability Savings Plan (RDSP)?

Renfrew is excited to offer you the opportunity to meet with 'The RDSP Guy' - Steven Williams! If your child has been approved for the Disability Tax Credit (DTC), or if you have questions about opening a Registered Disability Savings Plan (RDSP), Steven can review the RDSP information with you and help answer your questions about what to do next.

If your child has been approved for the Disability Tax Credit and you are ready to proceed with opening an RDSP with Steven, you are welcome to bring your SIN card and Driver's License to get the paperwork started on May 27th.

Wednesday, May 27, 2026

In-person at Renfrew's Thomas W. Buchanan Centre (TBC) 75 Sunpark Drive SE

Meetings will be held every half hour from 10:00am until 2:00pm. (10am, 10:30am, 11am, 11:30am, 12:00pm, 12:30pm, 1:00pm and 1:30pm).

Please register by **May 20, 2026** by emailing the Family Support team at familysupport@renfreweducation.org

When you register, please indicate your **first and second choices for meeting time**. Each meeting will be 30 minutes long. Thank you!



Sparkling Water Fundraiser

The Three Sisters Centre: Building Brighter Futures

This fundraising campaign supports the creation of Renfrew's new Three Sisters Centre — a purpose-built facility that will expand our specialized programming from ECS through Grade 12. This new space will allow us to serve students longer, support their growth at every stage, and continue delivering the life-changing programs that define Renfrew.



Support Renfrew with Refreshment!

This fundraiser features North Water — premium Canadian sparkling water sourced straight from the Rocky Mountains.

By purchasing, you're not just quenching your thirst — you're helping support Renfrew's programs and students.

Pricing:

- 6-Pack – \$18
- 12-Pack – \$36
- Flat of 24 – \$72

Every sip makes a difference — so stock up, stay hydrated, and support a great cause!



Scan QR code to place your order!

Or Visit <https://forms.gle/7jzn8EirCMjDqhKz5>

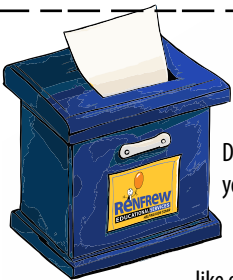
You don't need to place an order to support the TSC Capital Campaign

You can e-transfer a donation to foundationdonations@renfreweducation.org. When you e-transfer, please indicate that your donation is for the "TSC Capital Campaign". To receive a tax receipt, your donation must be \$20 or more and you must clearly indicate your **legal name, address and email address**

Important Dates

May 2026

Sun	Mon	Tue	Wed	Thu	Fri	Sat								
					1 Non-Instructional Day No Classes, No SSP	2								
3	4	5	6	7	8 EEP/Jr High ATTEND	9								
10	11	12	13	14	15 EEP/Jr High OFF	16								
17	18 Victoria Day Schools Closed	19	20	21	22 EEP/Jr High ATTEND	23								
24	25	26	27	28	29 EEP/Jr High OFF	30								
31	<div style="border: 1px solid black; padding: 5px;"> <p>Next Month:</p> <table style="width: 100%; border-collapse: collapse;"> <tr> <td style="width: 50%;">June 5 Non-Instructional Day <i>No Classes, No SSP</i></td> <td style="width: 50%;">June 19 EEP/Jr High <i>OFF</i></td> </tr> <tr> <td>June 12 EEP/Jr High <i>ATTEND</i></td> <td>June 26 EEP/Jr High <i>ATTEND</i></td> </tr> <tr> <td>June 13 Renfrew Family Day (10:00 AM-12:00 PM)</td> <td>June 29 Last Day of Classes</td> </tr> <tr> <td>June 18 Elementary Farewell</td> <td>June 30 Non-Instructional Day <i>No Classes, No SSP</i></td> </tr> </table> </div>						June 5 Non-Instructional Day <i>No Classes, No SSP</i>	June 19 EEP/Jr High <i>OFF</i>	June 12 EEP/Jr High <i>ATTEND</i>	June 26 EEP/Jr High <i>ATTEND</i>	June 13 Renfrew Family Day (10:00 AM-12:00 PM)	June 29 Last Day of Classes	June 18 Elementary Farewell	June 30 Non-Instructional Day <i>No Classes, No SSP</i>
June 5 Non-Instructional Day <i>No Classes, No SSP</i>	June 19 EEP/Jr High <i>OFF</i>													
June 12 EEP/Jr High <i>ATTEND</i>	June 26 EEP/Jr High <i>ATTEND</i>													
June 13 Renfrew Family Day (10:00 AM-12:00 PM)	June 29 Last Day of Classes													
June 18 Elementary Farewell	June 30 Non-Instructional Day <i>No Classes, No SSP</i>													



Renfrew's Suggestion Box

Do you have an idea or suggestion you want to pass on to us? A question that you want answered? Something about Renfrew that you like or don't like?

Email your suggestion to:
Renfrew@renfreweducation.org

or use this form, remembering to include your name and contact information.

Name: _____ Phone: _____

Email: _____